

Product datasheet for **TA340245**

NCE2 (UBE2F) Rabbit Polyclonal Antibody

Product data:

Product Type:	Primary Antibodies
Applications:	WB
Recommended Dilution:	WB
Reactivity:	Human
Host:	Rabbit
Isotype:	IgG
Clonality:	Polyclonal
Immunogen:	The immunogen for anti-UBE2F antibody: synthetic peptide directed towards the middle region of human UBE2F. Synthetic peptide located within the following region: TLKDVWGLNSLFTDLLNFDDPLNIEAAEHHLRDKEDFRNKVDDYIKRYA
Formulation:	Liquid. Purified antibody supplied in 1x PBS buffer with 0.09% (w/v) sodium azide and 2% sucrose. <i>Note that this product is shipped as lyophilized powder to China customers.</i>
Concentration:	lot specific
Purification:	Affinity Purified
Conjugation:	Unconjugated
Storage:	Store at -20°C as received.
Stability:	Stable for 12 months from date of receipt.
Predicted Protein Size:	21 kDa
Gene Name:	ubiquitin conjugating enzyme E2 F (putative)
Database Link:	NP_542409 Entrez Gene 140739 Human Q969M7
Background:	UBE2F belongs to the ubiquitin-conjugating enzyme family. UBE2F accepts the ubiquitin-like protein NEDD8 from the UBA3-NAE1 E1 complex and catalyzes its covalent attachment to other proteins.
Synonyms:	NCE2

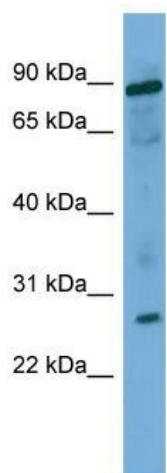


[View online »](#)

Note: Immunogen Sequence Homology: Dog: 100%; Pig: 100%; Rat: 100%; Horse: 100%; Human: 100%; Mouse: 100%; Bovine: 100%; Rabbit: 100%; Zebrafish: 100%; Guinea pig: 100%; Yeast: 79%

Protein Pathways: Ubiquitin mediated proteolysis

Product images:



WB Suggested Anti-UBE2F Antibody Titration: 0.2-1 ug/ml; ELISA Titer: 1: 1562500; Positive Control: 293T cell lysate