

## Product datasheet for **TA340244**

### NCE2 (UBE2F) Rabbit Polyclonal Antibody

#### Product data:

Product Type:	Primary Antibodies
Applications:	WB
Recommended Dilution:	WB, IF
Reactivity:	Human, Mouse
Host:	Rabbit
Isotype:	IgG
Clonality:	Polyclonal
Immunogen:	The immunogen for anti-UBE2F antibody: synthetic peptide directed towards the N terminal of human UBE2F. Synthetic peptide located within the following region: MLTLASKLKRDDGLKGSRTAATASDSTRVSVRDKLLVKEVAELEANLPC
Formulation:	Liquid. Purified antibody supplied in 1x PBS buffer with 0.09% (w/v) sodium azide and 2% sucrose. <i>Note that this product is shipped as lyophilized powder to China customers.</i>
Concentration:	lot specific
Purification:	Affinity Purified
Conjugation:	Unconjugated
Storage:	Store at -20°C as received.
Stability:	Stable for 12 months from date of receipt.
Predicted Protein Size:	21 kDa
Gene Name:	ubiquitin conjugating enzyme E2 F (putative)
Database Link:	<a href="#">NP_542409</a> <a href="#">Entrez Gene 67921 Mouse</a> <a href="#">Entrez Gene 140739 Human</a> <a href="#">Q969M7</a>
Background:	UBE2F belongs to the ubiquitin-conjugating enzyme family. UBE2F accepts the ubiquitin-like protein NEDD8 from the UBA3-NAE1 E1 complex and catalyzes its covalent attachment to other proteins.
Synonyms:	NCE2

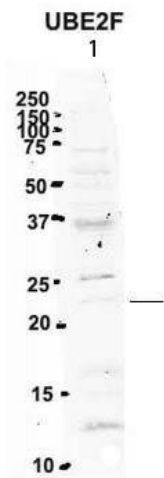


[View online »](#)

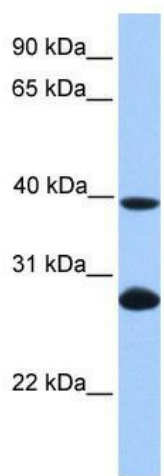
**Note:** Immunogen Sequence Homology: Pig: 100%; Rat: 100%; Horse: 100%; Human: 100%; Mouse: 100%; Bovine: 100%; Guinea pig: 100%; Dog: 93%; Rabbit: 93%

**Protein Pathways:** Ubiquitin mediated proteolysis

**Product images:**



Sample Type: 1. Human NT-2 cells (60ug); Primary Antibody Dilution: 1:2 ug/ml; Secondary Antibody: IRDye 800CW goat anti-rabbit from Li-COR Bioscience; Secondary Antibody Dilution: 1:20,000; Image Submitted by: Yuzhi Chen; University of Arkansas for



WB Suggested Anti-UBE2F Antibody Titration: 0.2-1 ug/ml; Positive Control: HeLa cell lysate