

Product datasheet for **TA340243**

Dynein (DYNLL2) Rabbit Polyclonal Antibody

Product data:

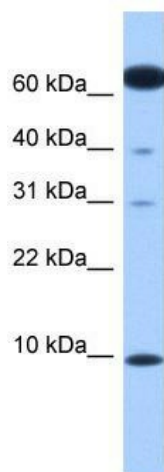
Product Type:	Primary Antibodies
Applications:	WB
Recommended Dilution:	WB
Reactivity:	Human
Host:	Rabbit
Isotype:	IgG
Clonality:	Polyclonal
Immunogen:	The immunogen for anti-DYNLL2 antibody: synthetic peptide directed towards the N terminal of human DYNLL2. Synthetic peptide located within the following region: MSDRKAVIKNADMSEDMQQDAVDCATQAMEKYNIEKDIAAYIKKEFDKKY
Formulation:	Liquid. Purified antibody supplied in 1x PBS buffer with 0.09% (w/v) sodium azide and 2% sucrose. <i>Note that this product is shipped as lyophilized powder to China customers.</i>
Concentration:	lot specific
Purification:	Affinity Purified
Conjugation:	Unconjugated
Storage:	Store at -20°C as received.
Stability:	Stable for 12 months from date of receipt.
Predicted Protein Size:	10 kDa
Gene Name:	dynein light chain LC8-type 2
Database Link:	NP_542408 Entrez Gene 140735 Human Q96FJ2
Background:	DYNLL2 belongs to the dynein light chain family. DYNLL2 may be involved in some aspects of dynein-related intracellular transport and motility. It may play a role in changing or maintaining the spatial distribution of cytoskeletal structures.
Synonyms:	Dlc2; DNCL1B; RSPH22



[View online »](#)

Note: Immunogen Sequence Homology: Dog: 100%; Pig: 100%; Rat: 100%; Horse: 100%; Human: 100%; Mouse: 100%; Bovine: 100%; Rabbit: 100%; Zebrafish: 100%; Guinea pig: 100%

Product images:



WB Suggested Anti-DYNLL2 Antibody Titration:
0.2-1 ug/ml; Positive Control: Human heart