

## Product datasheet for **TA340242**

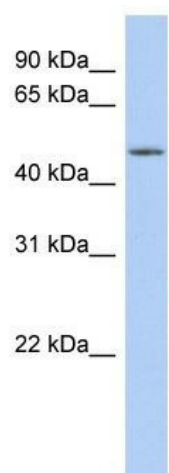
### WDR89 Rabbit Polyclonal Antibody

#### Product data:

|                         |  |
|-------------------------|--|
| Product Type:           | Primary Antibodies   |
| Applications:           | WB   |
| Recommended Dilution:   | WB   |
| Reactivity:             | Human  |
| Host:                   | Rabbit   |
| Isotype:                | IgG  |
| Clonality:              | Polyclonal   |
| Immunogen:              | The immunogen for anti-WDR89 antibody: synthetic peptide directed towards the middle region of human WDR89. Synthetic peptide located within the following region: TVRSFCWNVQDDSLTGGEDAQLLLWKPGAIEKTFTKKESMKIASSVHQR |
| Formulation:            | Liquid. Purified antibody supplied in 1x PBS buffer with 0.09% (w/v) sodium azide and 2% sucrose.<br><i>Note that this product is shipped as lyophilized powder to China customers.</i>                              |
| Concentration:          | lot specific   |
| Purification:           | Affinity Purified  |
| Conjugation:            | Unconjugated   |
| Storage:                | Store at -20°C as received.  |
| Stability:              | Stable for 12 months from date of receipt.   |
| Predicted Protein Size: | 43 kDa   |
| Gene Name:              | WD repeat domain 89  |
| Database Link:          | <a href="#">NP_542397</a><br><a href="#">Entrez Gene 112840 Human</a><br><a href="#">Q96FK6</a>  |
| Background:             | The specific function of the protein remains unknown.  |
| Synonyms:               | C14orf150; MSTP050   |
| Note:                   | Immunogen Sequence Homology: Human: 100%; Dog: 93%; Pig: 93%; Rat: 93%; Horse: 93%; Bovine: 93%; Rabbit: 92%; Mouse: 86%   |



[View online »](#)

**Product images:**

WB Suggested Anti-WDR89 Antibody Titration:  
0.2-1 ug/ml; ELISA Titer: 1: 62500; Positive  
Control: Human Spleen