

Product datasheet for **TA340241**

C14orf126 (DTD2) Rabbit Polyclonal Antibody

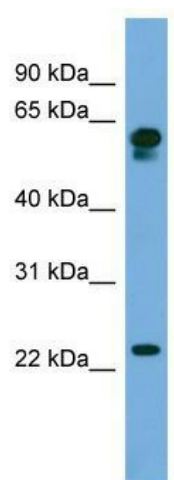
Product data:

Product Type:	Primary Antibodies
Applications:	WB
Recommended Dilution:	WB
Reactivity:	Human
Host:	Rabbit
Isotype:	IgG
Clonality:	Polyclonal
Immunogen:	The immunogen for anti-DDT2 antibody: synthetic peptide directed towards the middle region of human DTD2. Synthetic peptide located within the following region: ETENGKHVSILDLPGNILIIPQATLGGRKGRNMQYHSNSGKEEGFELYS
Formulation:	Liquid. Purified antibody supplied in 1x PBS buffer with 0.09% (w/v) sodium azide and 2% sucrose.
Concentration:	lot specific
Purification:	Affinity Purified
Conjugation:	Unconjugated
Storage:	Store at -20°C as received.
Stability:	Stable for 12 months from date of receipt.
Predicted Protein Size:	19 kDa
Gene Name:	D-tyrosyl-tRNA deacylase 2 (putative)
Database Link:	NP_542395 Entrez Gene 112487 Human Q96FN9
Background:	The function of DTD2 remains unknown.
Synonyms:	C14orf126
Note:	Immunogen Sequence Homology: Human: 100%; Dog: 93%; Pig: 93%; Rat: 93%; Mouse: 93%; Rabbit: 93%; Guinea pig: 93%; Horse: 86%; Bovine: 86%



[View online »](#)

Product images:



WB Suggested Anti-DTD2 Antibody Titration: 0.2-1 ug/ml; ELISA Titer: 1: 1562500; Positive Control: 721_B cell lysate