

Product datasheet for **TA340240**

ERI2 Rabbit Polyclonal Antibody

Product data:

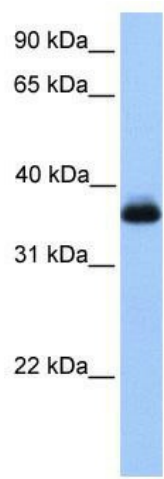
Product Type:	Primary Antibodies
Applications:	WB
Recommended Dilution:	WB
Reactivity:	Human
Host:	Rabbit
Isotype:	IgG
Clonality:	Polyclonal
Immunogen:	The immunogen for anti-ERI2 antibody: synthetic peptide directed towards the middle region of human ERI2. Synthetic peptide located within the following region: LQEVGIEFSGREHSGLDDSRNTALLAWKMIRDGCVMKITRSLNKGPFLLP
Formulation:	Liquid. Purified antibody supplied in 1x PBS buffer with 0.09% (w/v) sodium azide and 2% sucrose.
Concentration:	lot specific
Purification:	Affinity Purified
Conjugation:	Unconjugated
Storage:	Store at -20°C as received.
Stability:	Stable for 12 months from date of receipt.
Predicted Protein Size:	37 kDa
Gene Name:	ERI1 exoribonuclease family member 2
Database Link:	NP_542394 Entrez Gene 112479 Human A8K979
Background:	EXOD1 belongs to the EXOD1 family. It contains 1 exonuclease domain. EXOD1 is a member of a new subclass of exonucleases called the 3'hExo/ERI-1 subfamily of DEDDh nucleases.
Synonyms:	EXOD1; ZGRF5



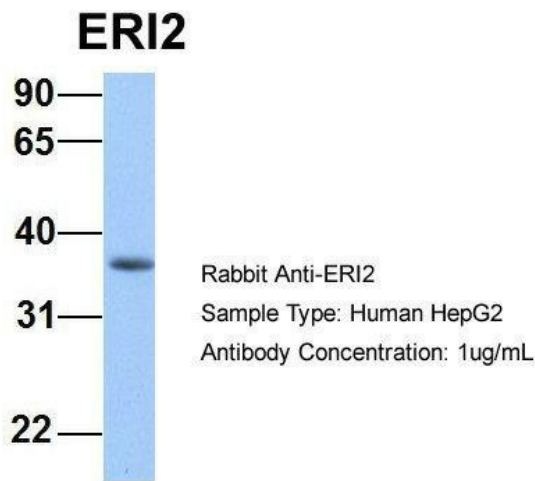
[View online »](#)

Note: Immunogen Sequence Homology: Pig: 100%; Rat: 100%; Horse: 100%; Human: 100%; Mouse: 100%; Rabbit: 100%; Guinea pig: 100%; Dog: 92%; Bovine: 92%; Zebrafish: 85%; Goat: 77%; Yeast: 75%

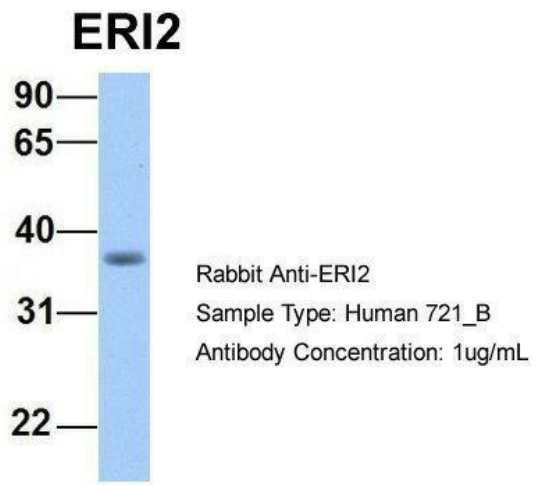
Product images:



WB Suggested Anti-ERI2 Antibody Titration: 0.2-1 ug/ml; Positive Control: Jurkat cell lysate



Host: Rabbit; Target Name: ERI2; Sample Tissue: Human HepG2; Antibody Dilution: 1.0 ug/ml; ERI2 is supported by BioGPS gene expression data to be expressed in HepG2



Host: Rabbit; Target Name: ERI2; Sample Tissue: Human 721_B; Antibody Dilution: 1.0 ug/ml; ERI2 is supported by BioGPS gene expression data to be expressed in 721_B