

Product datasheet for **TA340237**

CBLN4 Rabbit Polyclonal Antibody

Product data:

Product Type:	Primary Antibodies
Applications:	IHC, WB
Recommended Dilution:	WB, IHC
Reactivity:	Human
Host:	Rabbit
Isotype:	IgG
Clonality:	Polyclonal
Immunogen:	The immunogen for anti-CBLN4 antibody: synthetic peptide directed towards the C terminal of human CBLN4. Synthetic peptide located within the following region: HVIKVVQSQTIQVNLMLNGKPVISAFAGDKDVTREAATNGVLLYLDKEDK
Formulation:	Liquid. Purified antibody supplied in 1x PBS buffer with 0.09% (w/v) sodium azide and 2% sucrose. <i>Note that this product is shipped as lyophilized powder to China customers.</i>
Concentration:	lot specific
Purification:	Affinity Purified
Conjugation:	Unconjugated
Storage:	Store at -20°C as received.
Stability:	Stable for 12 months from date of receipt.
Predicted Protein Size:	22 kDa
Gene Name:	cerebellin 4 precursor
Database Link:	NP_542184 Entrez Gene 140689 Human Q9NTU7



[View online »](#)

Background:

Cerebellin is a sixteen aa peptide found mainly in the adrenal medulla, where it has been shown to have a neuromodulatory function. Cerebellin is derived from precerebellin, a protein with sequence similarity to the noncollagen domain of complement component C1qB. CBLN4 is a glycoprotein which shares sequence similarity with precerebellin. Cerebellin is a sixteen aa peptide found mainly in the adrenal medulla, where it has been shown to have a neuromodulatory function. Cerebellin is derived from precerebellin, a protein with sequence similarity to the noncollagen domain of complement component C1qB. The protein encoded by this gene is a glycoprotein which shares sequence similarity with precerebellin.

Synonyms:

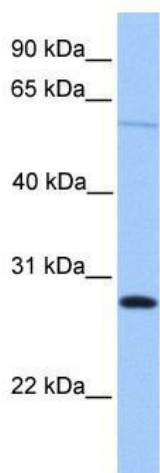
CBLNL1

Note:

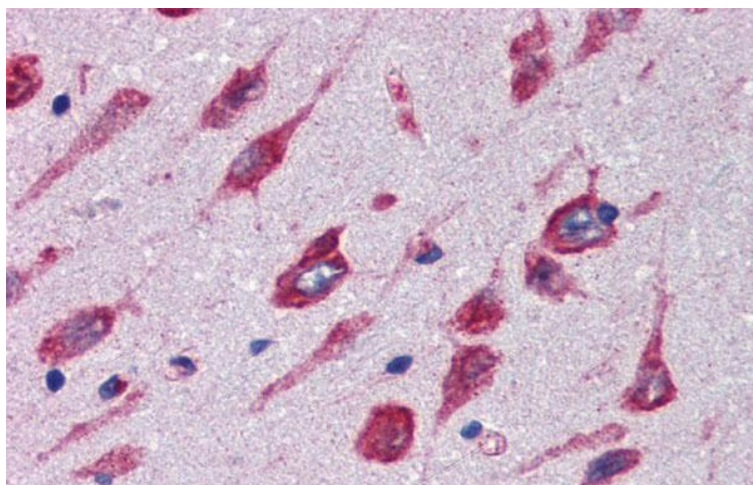
Immunogen Sequence Homology: Dog: 100%; Pig: 100%; Rat: 100%; Horse: 100%; Human: 100%; Mouse: 100%; Bovine: 100%; Rabbit: 100%; Zebrafish: 100%; Guinea pig: 100%

Protein Families:

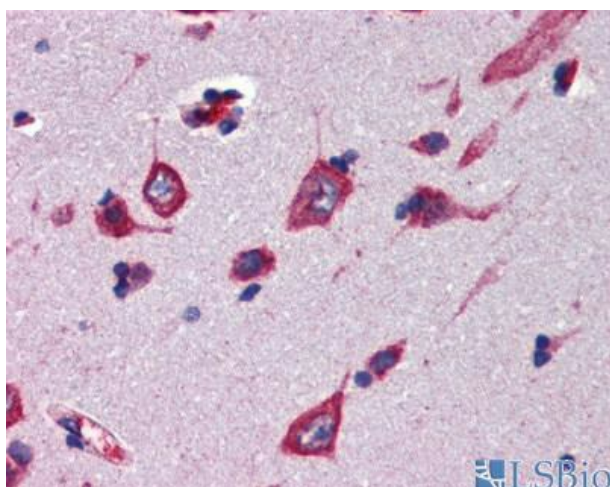
Secreted Protein

Product images:

WB Suggested Anti-CBLN4 Antibody Titration: 1 ug/ml; Positive Control: HeLa cell lysate



Immunohistochemistry with Human, cortex tissue at an antibody concentration of 5.0 ug/ml using anti-CBLN4 antibody



Human cortex