

Product datasheet for **TA340236**

ACTRT2 Rabbit Polyclonal Antibody

Product data:

Product Type:	Primary Antibodies
Applications:	WB
Recommended Dilution:	WB
Reactivity:	Human
Host:	Rabbit
Isotype:	IgG
Clonality:	Polyclonal
Immunogen:	The immunogen for anti-ACTRT2 antibody: synthetic peptide directed towards the C terminal of human ACTRT2. Synthetic peptide located within the following region: LDDRLLKELEQLASKDTPIKITAPPDRWFSTWIGASIVTSLSSFQMWVT
Formulation:	Liquid. Purified antibody supplied in 1x PBS buffer with 0.09% (w/v) sodium azide and 2% sucrose.
Concentration:	lot specific
Purification:	Affinity Purified
Conjugation:	Unconjugated
Storage:	Store at -20°C as received.
Stability:	Stable for 12 months from date of receipt.
Predicted Protein Size:	42 kDa
Gene Name:	actin related protein T2
Database Link:	NP_536356 Entrez Gene 140625 Human Q8TDY3



[View online »](#)

Background:

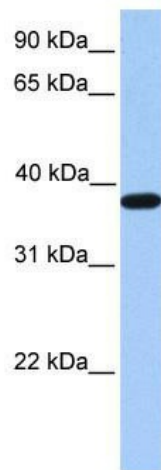
ACTRT2 belongs to the actin family. Studies have shown that this protein may be involved in cytoskeletal organization similar to other cytoplasmic actin-related protein (ARP) subfamily members. Antibody raised against the human protein has been used to detect the protein by immunoblotting and immunofluorescence microscopy, demonstrating its specific synthesis in the testis, late in spermatid differentiation, and its localization in the calyx. The protein encoded by this intronless gene belongs to the actin family. Studies have shown that this protein may be involved in cytoskeletal organization similar to other cytoplasmic actin-related protein (ARP) subfamily members. Antibody raised against the human protein has been used to detect the protein by immunoblotting and immunofluorescence microscopy, demonstrating its specific synthesis in the testis, late in spermatid differentiation, and its localization in the calyx.

Synonyms:

Arp-T2; ARPM2; ARPT2; HARPM2

Note:

Immunogen Sequence Homology: Dog: 100%; Rat: 100%; Human: 100%; Mouse: 100%; Pig: 93%; Horse: 93%; Bovine: 93%; Guinea pig: 79%

Product images:

WB Suggested Anti-ACTRT2 Antibody Titration:
0.2-1 ug/ml; Positive Control: Human Muscle