

Product datasheet for **TA340234**

Olfm3 Rabbit Polyclonal Antibody

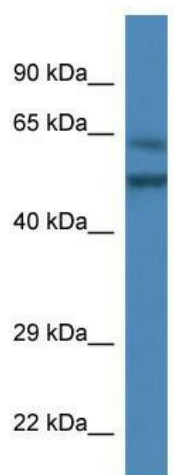
Product data:

Product Type:	Primary Antibodies
Applications:	WB
Recommended Dilution:	WB
Reactivity:	Mouse
Host:	Rabbit
Isotype:	IgG
Clonality:	Polyclonal
Immunogen:	The immunogen for anti-Olfm3 antibody: synthetic peptide corresponding to a region of Mouse. Synthetic peptide located within the following region: PKRSAGESFMICGTLVVTNSHLTGAKVYYSYSTKTSTYEYTDIPFHNQYF
Formulation:	Liquid. Purified antibody supplied in 1x PBS buffer with 0.09% (w/v) sodium azide and 2% sucrose.
Concentration:	lot specific
Purification:	Affinity Purified
Conjugation:	Unconjugated
Storage:	Store at -20°C as received.
Stability:	Stable for 12 months from date of receipt.
Predicted Protein Size:	53 kDa
Gene Name:	olfactomedin 3
Database Link:	NP_694797 Entrez Gene 229759 Mouse P63056
Background:	The function remains unknown.
Synonyms:	NOE3; NOELIN3; NOELIN3_V1; NOELIN3_V2; NOELIN3_V3; NOELIN3_V4; NOELIN3_V5; NOELIN3_V6; Olfactomedin-3; OPTIMEDIN
Note:	Immunogen Sequence Homology: Dog: 100%; Pig: 100%; Rat: 100%; Horse: 100%; Human: 100%; Mouse: 100%; Bovine: 100%; Rabbit: 100%; Zebrafish: 100%; Guinea pig: 100%



[View online »](#)

Product images:



WB Suggested Anti-Olfm3 Antibody; Titration: 1.0 ug/ml; Positive Control: Mouse Liver