

Product datasheet for **TA340233**

KLHDC3 Rabbit Polyclonal Antibody

Product data:

Product Type:	Primary Antibodies
Applications:	WB
Recommended Dilution:	WB
Reactivity:	Human
Host:	Rabbit
Isotype:	IgG
Clonality:	Polyclonal
Immunogen:	The immunogen for anti-KLHDC3 antibody: synthetic peptide directed towards the N terminal of human KLHDC3. Synthetic peptide located within the following region: MLRWTVHLEGGPRRVNHAAVAVGHRVYSFGGYCSGEDYETLRQIDVHIFN
Formulation:	Liquid. Purified antibody supplied in 1x PBS buffer with 0.09% (w/v) sodium azide and 2% sucrose. <i>Note that this product is shipped as lyophilized powder to China customers.</i>
Concentration:	lot specific
Purification:	Affinity Purified
Conjugation:	Unconjugated
Storage:	Store at -20°C as received.
Stability:	Stable for 12 months from date of receipt.
Predicted Protein Size:	43 kDa
Gene Name:	kelch domain containing 3
Database Link:	NP_476502 Entrez Gene 116138 Human Q9BQ90
Background:	The protein encoded by this gene contains six repeated kelch motifs that are structurally similar to recombination activating gene 2 (RAG2), a protein involved in the activation of the V(D)J recombination. In mouse, this gene is found to express specifically in testis. Its expression in pachytene spermatocytes is localized to cytoplasm and meiotic chromatin, which suggests that this gene may be involved in meiotic recombination.

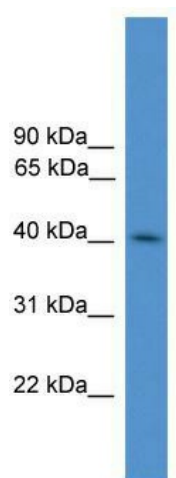


[View online »](#)

Synonyms: dj20C7.3; PEAS

Note: Immunogen Sequence Homology: Dog: 100%; Pig: 100%; Rat: 100%; Horse: 100%; Human: 100%; Mouse: 100%; Bovine: 100%; Rabbit: 100%; Zebrafish: 100%; Guinea pig: 100%

Product images:



WB Suggested Anti-KLHDC3 Antibody Titration:
0.2-1 ug/ml; ELISA Titer: 1: 1562500; Positive
Control: Human Placenta