

Product datasheet for **TA340232**

CIB3 Rabbit Polyclonal Antibody

Product data:

Product Type:	Primary Antibodies
Applications:	WB
Recommended Dilution:	WB
Reactivity:	Human
Host:	Rabbit
Isotype:	IgG
Clonality:	Polyclonal
Immunogen:	The immunogen for anti-CIB3 antibody: synthetic peptide directed towards the N terminal of human CIB3. Synthetic peptide located within the following region: QDLAPQLVPLDYTTCPDVKVPYELIGSMPELKDNPFQRQIAQVFSEDGDG
Formulation:	Liquid. Purified antibody supplied in 1x PBS buffer with 0.09% (w/v) sodium azide and 2% sucrose. <i>Note that this product is shipped as lyophilized powder to China customers.</i>
Concentration:	lot specific
Purification:	Affinity Purified
Conjugation:	Unconjugated
Storage:	Store at -20°C as received.
Stability:	Stable for 12 months from date of receipt.
Predicted Protein Size:	22 kDa
Gene Name:	calcium and integrin binding family member 3
Database Link:	NP_473454 Entrez Gene 117286 Human Q96Q77



[View online »](#)

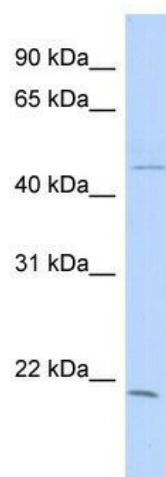
Background: The specific function of CIB3 is not yet known. This gene product shares a high degree of sequence similarity with DNA-dependent protein kinase catalytic subunit-interacting protein 2 in human and mouse, and like them may bind the catalytic subunit of DNA-dependent protein kinases. The exact function of this gene is not known. PRIMARYREFSEQ_SPAN PRIMARY_IDENTIFIER PRIMARY_SPAN COMP 1-635 AB050868.1 1-635 636-661 AW295492.1 15-40 c

Synonyms: KIP3

Note: Immunogen Sequence Homology: Dog: 100%; Rat: 100%; Human: 100%; Mouse: 100%; Sheep: 100%; Bovine: 100%; Rabbit: 100%; Pig: 93%; Zebrafish: 93%; Guinea pig: 86%; Horse: 75%

Protein Families: Druggable Genome

Product images:



WB Suggested Anti-CIB3 Antibody Titration: 0.2-1 ug/ml; ELISA Titer: 1: 62500; Positive Control: Human Spleen