

Product datasheet for **TA340229**

TADA1L (TADA1) Rabbit Polyclonal Antibody

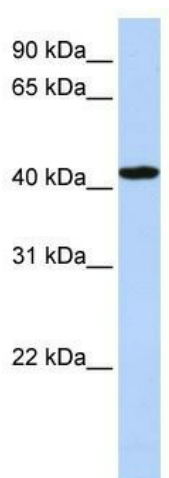
Product data:

Product Type:	Primary Antibodies
Applications:	WB
Recommended Dilution:	WB
Reactivity:	Human
Host:	Rabbit
Isotype:	IgG
Clonality:	Polyclonal
Immunogen:	The immunogen for anti-TADA1L antibody: synthetic peptide directed towards the C terminal of human TADA1L. Synthetic peptide located within the following region: REVIPHTVYALNIERITKLWHPNHEELQQDKVHRQLAAKEGLLLC
Formulation:	Liquid. Purified antibody supplied in 1x PBS buffer with 0.09% (w/v) sodium azide and 2% sucrose.
Concentration:	lot specific
Purification:	Affinity Purified
Conjugation:	Unconjugated
Storage:	Store at -20°C as received.
Stability:	Stable for 12 months from date of receipt.
Predicted Protein Size:	37 kDa
Gene Name:	transcriptional adaptor 1
Database Link:	NP_444281 Entrez Gene 117143 Human Q96BN2
Background:	TADA1L belongs to the TADA1L family. It is probably involved in transcriptional regulation.
Synonyms:	ADA1; hADA1; HFI1; STAF42; TADA1L
Note:	Immunogen Sequence Homology: Dog: 100%; Pig: 100%; Rat: 100%; Horse: 100%; Human: 100%; Mouse: 100%; Bovine: 100%; Rabbit: 100%; Guinea pig: 93%; Zebrafish: 75%



[View online »](#)

Product images:



WB Suggested Anti-TADA1L Antibody Titration:
0.2-1 ug/ml; ELISA Titer: 1: 2500; Positive Control:
Hela cell lysate