

Product datasheet for **TA340227**

AZIN2 Rabbit Polyclonal Antibody

Product data:

Product Type:	Primary Antibodies
Applications:	WB
Recommended Dilution:	WB
Reactivity:	Human, Rat
Host:	Rabbit
Isotype:	IgG
Clonality:	Polyclonal
Immunogen:	The immunogen for anti-ADC antibody: synthetic peptide directed towards the middle region of human ADC. Synthetic peptide located within the following region: RHLLENAKKHHVEVVGVSFHIGSGCPDPQAYAQSIADARLVFEMGTELGH
Formulation:	Liquid. Purified antibody supplied in 1x PBS buffer with 0.09% (w/v) sodium azide and 2% sucrose. <i>Note that this product is shipped as lyophilized powder to China customers.</i>
Concentration:	lot specific
Purification:	Affinity Purified
Conjugation:	Unconjugated
Storage:	Store at -20°C as received.
Stability:	Stable for 12 months from date of receipt.
Predicted Protein Size:	50 kDa
Gene Name:	antizyme inhibitor 2
Database Link:	NP_443724 Entrez Gene 366473 Rat Entrez Gene 113451 Human Q96A70
Background:	ADC decarboxylates L-arginine to agmatine. Truncated splice isoforms probably lack activity.
Synonyms:	ADC; AZI2; AZIB1; ODC-p; ODC1L; ODCp
Note:	Immunogen Sequence Homology: Pig: 100%; Rat: 100%; Horse: 100%; Human: 100%; Mouse: 100%; Bovine: 100%; Rabbit: 93%; Guinea pig: 86%; Dog: 79%

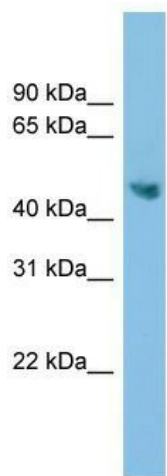


[View online »](#)

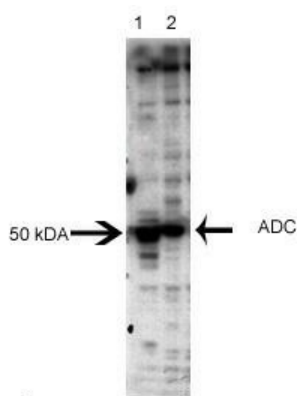
Protein Families: Druggable Genome

Protein Pathways: Arginine and proline metabolism, Metabolic pathways

Product images:



WB Suggested Anti-ADC Antibody Titration: 0.2-1 ug/ml; ELISA Titer: 1: 12500; Positive Control: COLO205 cell lysate



Sample Type: Human and Rat Cerebral Cortex
Primary Dilution: 1: 3000

Legend

- 1. Human Cerebral Cortex
- 2. Rat Cerebral Cortex