

Product datasheet for **TA340224**

GBP5 Rabbit Polyclonal Antibody

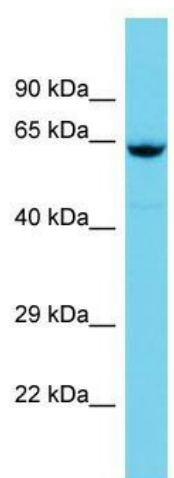
Product data:

Product Type:	Primary Antibodies
Applications:	WB
Recommended Dilution:	WB
Reactivity:	Human
Host:	Rabbit
Isotype:	IgG
Clonality:	Polyclonal
Immunogen:	The immunogen for Anti-GBP5 antibody is: synthetic peptide directed towards the N-terminal region of Human GBP5. Synthetic peptide located within the following region: LHNVTELTDLKARNSPDLDRVEDPADSASFFPDLVWTLRDFCLGLEIDG
Formulation:	Liquid. Purified antibody supplied in 1x PBS buffer with 0.09% (w/v) sodium azide and 2% sucrose. <i>Note that this product is shipped as lyophilized powder to China customers.</i>
Concentration:	lot specific
Purification:	Affinity Purified
Conjugation:	Unconjugated
Storage:	Store at -20°C as received.
Stability:	Stable for 12 months from date of receipt.
Predicted Protein Size:	66 kDa
Gene Name:	guanylate binding protein 5
Database Link:	NP_443174 Entrez Gene 115362 Human Q96PP8
Background:	GBP5 stimulates the NLRP3 inflammasome assembly upon bacterial challenge.
Synonyms:	GBP-5
Note:	Immunogen Sequence Homology: Human: 100%



[View online »](#)

Product images:



Host: Rabbit; Target Name: GBP5; Sample Tissue: Lymph Node Tumor lysates; Antibody Dilution: 1.0 ug/ml