

## Product datasheet for TA340223

### GBP4 Rabbit Polyclonal Antibody

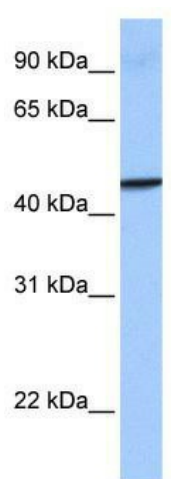
#### Product data:

Product Type:	Primary Antibodies
Applications:	WB
Recommended Dilution:	WB
Reactivity:	Human
Host:	Rabbit
Isotype:	IgG
Clonality:	Polyclonal
Immunogen:	The immunogen for anti-GBP4 antibody: synthetic peptide directed towards the middle region of human GBP4. Synthetic peptide located within the following region: NAVTALAQLENPAAVQRAADHYSQQMAQQLRLPTDTLQELLDVHAACERE
Formulation:	Liquid. Purified antibody supplied in 1x PBS buffer with 0.09% (w/v) sodium azide and 2% sucrose.
Concentration:	lot specific
Purification:	Affinity Purified
Conjugation:	Unconjugated
Storage:	Store at -20°C as received.
Stability:	Stable for 12 months from date of receipt.
Predicted Protein Size:	45 kDa
Gene Name:	guanylate binding protein 4
Database Link:	<a href="#">NP_443173</a> <a href="#">Entrez Gene 115361 Human</a> <a href="#">Q96PP9</a>
Background:	GBP4 belongs to the GBP family. It binds GTP, GDP and GMP. Hydrolyzes GTP very efficiently; GDP rather than GMP is the major reaction product. GBP4 plays a role in erythroid differentiation.
Synonyms:	Mpa2


[View online »](#)

**Note:** Immunogen Sequence Homology: Human: 100%; Rat: 93%; Mouse: 93%; Bovine: 93%; Pig: 91%; Guinea pig: 91%; Dog: 86%; Rabbit: 86%; Horse: 79%

**Product images:**



WB Suggested Anti-GBP4 Antibody Titration: 0.2-1 ug/ml; Positive Control: Human Placenta