

## Product datasheet for TA340221

### TSGA13 Rabbit Polyclonal Antibody

#### Product data:

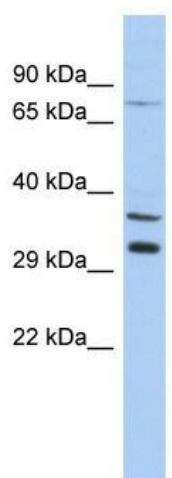
<b>Product Type:</b>	Primary Antibodies
<b>Applications:</b>	WB
<b>Recommended Dilution:</b>	WB
<b>Reactivity:</b>	Human
<b>Host:</b>	Rabbit
<b>Isotype:</b>	IgG
<b>Clonality:</b>	Polyclonal
<b>Immunogen:</b>	The immunogen for anti-TSGA13 antibody: synthetic peptide directed towards the middle region of human TSGA13. Synthetic peptide located within the following region: ASERPISKVIREPLTLASLLEDMPTRTAPGESAFRNGRAPQWIIKKATVI
<b>Formulation:</b>	Liquid. Purified antibody supplied in 1x PBS buffer with 0.09% (w/v) sodium azide and 2% sucrose.
<b>Concentration:</b>	lot specific
<b>Purification:</b>	Affinity Purified
<b>Conjugation:</b>	Unconjugated
<b>Storage:</b>	Store at -20°C as received.
<b>Stability:</b>	Stable for 12 months from date of receipt.
<b>Predicted Protein Size:</b>	32 kDa
<b>Gene Name:</b>	testis specific 13
<b>Database Link:</b>	<a href="#">NP_443165</a> <a href="#">Entrez Gene 114960 Human</a> <a href="#">Q96PP4</a>
<b>Background:</b>	The specific function of TSGA13 is not yet known.



**Synonyms:** OTTHUMP00000207094

**Note:** Immunogen Sequence Homology: Human: 100%; Bovine: 86%; Pig: 79%; Guinea pig: 79%

**Product images:**



WB Suggested Anti-TSGA13 Antibody Titration:  
0.2-1  $\mu\text{g/ml}$ ; ELISA Titer: 1: 312500; Positive  
Control: THP-1 cell lysate