

Product datasheet for **TA340220**

RHPN1 Rabbit Polyclonal Antibody

Product data:

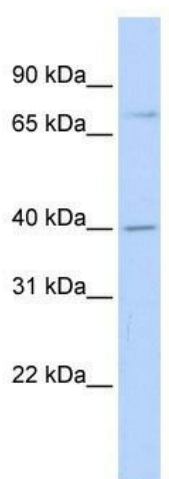
Product Type:	Primary Antibodies
Applications:	WB
Recommended Dilution:	WB
Reactivity:	Human
Host:	Rabbit
Isotype:	IgG
Clonality:	Polyclonal
Immunogen:	The immunogen for anti-RHPN1 antibody: synthetic peptide directed towards the middle region of human RHPN1. Synthetic peptide located within the following region: SAKNRWRLVGPVHLTRGEGGFGLTRGDSPVLIAAVIPGSQAAAAGLKEG
Formulation:	Liquid. Purified antibody supplied in 1x PBS buffer with 0.09% (w/v) sodium azide and 2% sucrose. <i>Note that this product is shipped as lyophilized powder to China customers.</i>
Concentration:	lot specific
Purification:	Affinity Purified
Conjugation:	Unconjugated
Storage:	Store at -20°C as received.
Stability:	Stable for 12 months from date of receipt.
Predicted Protein Size:	73 kDa
Gene Name:	rhophilin, Rho GTPase binding protein 1
Database Link:	NP_443156 Entrez Gene 114822 Human Q8TCX5
Background:	RHPN1 has no enzymatic activity. RHPN1 may serve as a target for Rho, and interact with some cytoskeletal component upon Rho binding or relay a Rho signal to other molecules.
Synonyms:	ODF5; RHOPHILIN; RHPN



[View online »](#)

Note: Immunogen Sequence Homology: Human: 100%; Pig: 93%; Rat: 93%; Horse: 93%; Mouse: 93%; Bovine: 93%; Guinea pig: 93%; Dog: 92%; Zebrafish: 86%

Product images:



WB Suggested Anti-RHPN1 Antibody Titration:
0.2-1 ug/ml; ELISA Titer: 1: 12500; Positive
Control: Transfected 293T