

## Product datasheet for **TA340218**

### KLHL32 Rabbit Polyclonal Antibody

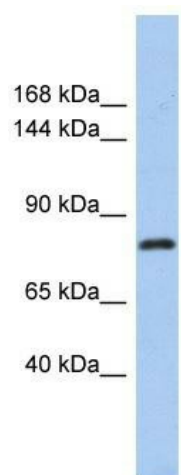
#### Product data:

Product Type:	Primary Antibodies
Applications:	WB
Recommended Dilution:	WB
Reactivity:	Human
Host:	Rabbit
Isotype:	IgG
Clonality:	Polyclonal
Immunogen:	The immunogen for anti-KLHL32 antibody: synthetic peptide directed towards the middle region of human KLHL32. Synthetic peptide located within the following region: DVSREGKEEVFYGPTLPFASNGIAACFLPAPYFTCPNLQTLQVPHHRIGT
Formulation:	Liquid. Purified antibody supplied in 1x PBS buffer with 0.09% (w/v) sodium azide and 2% sucrose. <i>Note that this product is shipped as lyophilized powder to China customers.</i>
Concentration:	lot specific
Purification:	Affinity Purified
Conjugation:	Unconjugated
Storage:	Store at -20°C as received.
Stability:	Stable for 12 months from date of receipt.
Predicted Protein Size:	70 kDa
Gene Name:	kelch like family member 32
Database Link:	<a href="#">NP_443136</a> <a href="#">Entrez Gene 114792 Human</a> <a href="#">Q96NJ5</a>
Background:	The specific function of KLHL32 is not yet known.
Synonyms:	BKLHD5; dj21F7.1; KIAA1900; UG0030H05
Note:	Immunogen Sequence Homology: Dog: 100%; Pig: 100%; Rat: 100%; Horse: 100%; Human: 100%; Mouse: 100%; Bovine: 100%; Rabbit: 100%; Zebrafish: 100%; Guinea pig: 100%



[View online »](#)

## Product images:



WB Suggested Anti-KLHL32 Antibody Titration:  
0.2-1 ug/ml; ELISA Titer: 1: 62500; Positive  
Control: OVCAR-3 cell lysate