

## Product datasheet for **TA340217**

### MED8 Rabbit Polyclonal Antibody

#### Product data:

Product Type:	Primary Antibodies
Applications:	WB
Recommended Dilution:	WB
Reactivity:	Human
Host:	Rabbit
Isotype:	IgG
Clonality:	Polyclonal
Immunogen:	The immunogen for anti-MED8 antibody: synthetic peptide directed towards the N terminal of human MED8. Synthetic peptide located within the following region: MQREEKQLEASLDALLSQVADLKNLSLGSFICKLENEYGRLLTWPSVLDSFA
Formulation:	Liquid. Purified antibody supplied in 1x PBS buffer with 0.09% (w/v) sodium azide and 2% sucrose. <i>Note that this product is shipped as lyophilized powder to China customers.</i>
Concentration:	lot specific
Purification:	Affinity Purified
Conjugation:	Unconjugated
Storage:	Store at -20°C as received.
Stability:	Stable for 12 months from date of receipt.
Predicted Protein Size:	33 kDa
Gene Name:	mediator complex subunit 8
Database Link:	<a href="#">NP_443109</a> <a href="#">Entrez Gene 112950 Human</a> <a href="#">Q96G25</a>



[View online »](#)

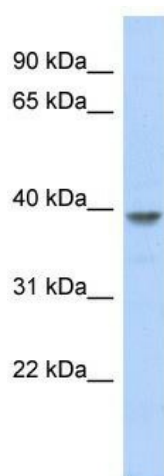
**Background:** MED8 is a protein that is one of more than 20 subunits of the mediator complex, first identified in *S. cerevisiae*, that is required for activation of transcription. MED8 also interacts with elongins B and C, and CUL2 and RBX1, to reconstitute a ubiquitin ligase. This gene encodes a protein that is one of more than 20 subunits of the mediator complex, first identified in *S. cerevisiae*, that is required for activation of transcription. The product of this gene also interacts with elongins B and C, and CUL2 and RBX1, to reconstitute a ubiquitin ligase. Two alternative transcripts encoding different isoforms have been described.

**Synonyms:** ARC32

**Note:** Immunogen Sequence Homology: Dog: 100%; Pig: 100%; Rat: 100%; Horse: 100%; Human: 100%; Mouse: 100%; Bovine: 100%; Rabbit: 100%; Guinea pig: 100%; Zebrafish: 86%

**Protein Families:** Druggable Genome, Transcription Factors

### Product images:



WB Suggested Anti-MED8 Antibody Titration: 0.2-1 ug/ml; ELISA Titer: 1: 12500; Positive Control: Human Stomach