

## Product datasheet for **TA340216**

### VPS26B Rabbit Polyclonal Antibody

#### Product data:

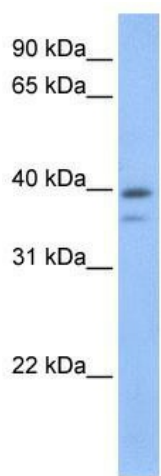
Product Type:	Primary Antibodies
Applications:	WB
Recommended Dilution:	WB
Reactivity:	Human
Host:	Rabbit
Isotype:	IgG
Clonality:	Polyclonal
Immunogen:	The immunogen for anti-VPS26B antibody: synthetic peptide directed towards the C terminal of human VPS26B. Synthetic peptide located within the following region: AGYELTPTMRDINKKFSVRYLNLVLIDEEERRYFKQEVVLWRKGDIVR
Formulation:	Liquid. Purified antibody supplied in 1x PBS buffer with 0.09% (w/v) sodium azide and 2% sucrose.
Concentration:	lot specific
Purification:	Affinity Purified
Conjugation:	Unconjugated
Storage:	Store at -20°C as received.
Stability:	Stable for 12 months from date of receipt.
Predicted Protein Size:	39 kDa
Gene Name:	VPS26 retromer complex component B
Database Link:	<a href="#">NP_443107</a> <a href="#">Entrez Gene 112936 Human</a> <a href="#">Q4G0F5</a>
Background:	VPS26B belongs to the VPS26 family. VPS26B is probable component of the retromer complex, a complex required to retrieve lysosomal enzyme receptors (IGF2R and M6PR) from endosomes to the trans-Golgi network.
Synonyms:	Pep8b



[View online »](#)

**Note:** Immunogen Sequence Homology: Dog: 100%; Pig: 100%; Rat: 100%; Horse: 100%; Human: 100%; Mouse: 100%; Rabbit: 100%; Guinea pig: 100%; Bovine: 93%; Zebrafish: 93%; Yeast: 86%; Goat: 79%

**Product images:**



WB Suggested Anti-VPS26B Antibody Titration:  
0.2-1 ug/ml; Positive Control: Human brain