

## Product datasheet for TA340212

### LACTB Rabbit Polyclonal Antibody

#### Product data:

Product Type:	Primary Antibodies
Applications:	WB
Recommended Dilution:	WB
Reactivity:	Human
Host:	Rabbit
Isotype:	IgG
Clonality:	Polyclonal
Immunogen:	The immunogen for anti-LACTB antibody: synthetic peptide directed towards the C terminal of human LACTB. Synthetic peptide located within the following region: TEMSWDKEGKYAMAWGVVERKQTYGSCRKQRHYASHTGGAVGASSVLLVL
Formulation:	Liquid. Purified antibody supplied in 1x PBS buffer with 0.09% (w/v) sodium azide and 2% sucrose. <i>Note that this product is shipped as lyophilized powder to China customers.</i>
Concentration:	lot specific
Purification:	Affinity Purified
Conjugation:	Unconjugated
Storage:	Store at -20°C as received.
Stability:	Stable for 12 months from date of receipt.
Predicted Protein Size:	61 kDa
Gene Name:	lactamase beta
Database Link:	<a href="#">NP_116246</a> <a href="#">Entrez Gene 114294 Human P83111</a>



[View online »](#)

**Background:**

LACTB belongs to the peptidase S12 family. LACTB is a protein from the large 39S subunit of the mitochondrial ribosome (mitoribosome). It has some sequence similarity to prokaryotic beta-lactamases but most of the residues that are responsible for the beta-lactamase activity are not conserved between the two proteins. This gene encodes a protein from the large 39S subunit of the mitochondrial ribosome (mitoribosome). The encoded protein has some sequence similarity to prokaryotic beta-lactamases but most of the residues that are responsible for the beta-lactamase activity are not conserved between the two proteins.

**Synonyms:**

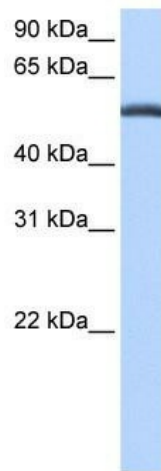
G24; MRPL56

**Note:**

Immunogen Sequence Homology: Dog: 100%; Pig: 100%; Rat: 100%; Horse: 100%; Human: 100%; Mouse: 100%; Bovine: 100%; Guinea pig: 100%; Zebrafish: 85%

**Protein Families:**

Protease

**Product images:**

WB Suggested Anti-LACTB Antibody Titration: 0.2-1 ug/ml; Positive Control: Human Liver