

Product datasheet for **TA340211**

LACTB Rabbit Polyclonal Antibody

Product data:

Product Type:	Primary Antibodies
Applications:	WB
Recommended Dilution:	WB
Reactivity:	Human
Host:	Rabbit
Isotype:	IgG
Clonality:	Polyclonal
Immunogen:	The immunogen for anti-LACTB antibody: synthetic peptide directed towards the middle region of human LACTB. Synthetic peptide located within the following region: QEKEGKSNEKNDFTKFKTEQENEAKCRNSKPGKKKNDFEQGELYLREKFE
Formulation:	Liquid. Purified antibody supplied in 1x PBS buffer with 0.09% (w/v) sodium azide and 2% sucrose. <i>Note that this product is shipped as lyophilized powder to China customers.</i>
Concentration:	lot specific
Purification:	Affinity Purified
Conjugation:	Unconjugated
Storage:	Store at -20°C as received.
Stability:	Stable for 12 months from date of receipt.
Predicted Protein Size:	41 kDa
Gene Name:	lactamase beta
Database Link:	NP_741982 Entrez Gene 114294 Human P83111



[View online »](#)

Background:

LACTB belongs to the peptidase S12 family. LACTB is a protein from the large 39S subunit of the mitochondrial ribosome (mitoribosome). It has some sequence similarity to prokaryotic beta-lactamases but most of the residues that are responsible for the beta-lactamase activity are not conserved between the two proteins. This gene encodes a protein from the large 39S subunit of the mitochondrial ribosome (mitoribosome). The encoded protein has some sequence similarity to prokaryotic beta-lactamases but most of the residues that are responsible for the beta-lactamase activity are not conserved between the two proteins. This gene encodes a protein from the large 39S subunit of the mitochondrial ribosome (mitoribosome). The encoded protein has some sequence similarity to prokaryotic beta-lactamases but most of the residues that are responsible for the beta-lactamase activity are not conserved between the two proteins.

Synonyms:

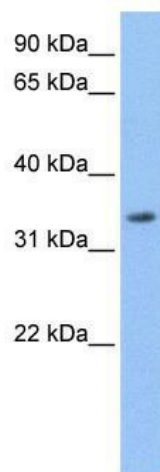
G24; MRPL56

Note:

Immunogen Sequence Homology: Rat: 100%; Horse: 100%; Human: 100%; Rabbit: 100%; Dog: 93%; Pig: 93%; Bovine: 93%; Guinea pig: 93%; Mouse: 86%

Protein Families:

Protease

Product images:

WB Suggested Anti-LACTB Antibody Titration: 0.2-1 ug/ml; Positive Control: HepG2 cell lysate