

## Product datasheet for **TA340210**

### CC2D1B Rabbit Polyclonal Antibody

#### Product data:

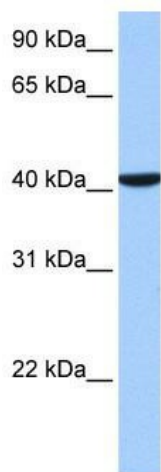
Product Type:	Primary Antibodies
Applications:	WB
Recommended Dilution:	WB
Reactivity:	Human
Host:	Rabbit
Isotype:	IgG
Clonality:	Polyclonal
Immunogen:	The immunogen for anti-CC2D1B antibody: synthetic peptide directed towards the C terminal of human CC2D1B. Synthetic peptide located within the following region: IVRGMNLPAPPGVTPDDLDAFVRFEFHYPNSDQAQKSKTAVVKNTNSPEF
Formulation:	Liquid. Purified antibody supplied in 1x PBS buffer with 0.09% (w/v) sodium azide and 2% sucrose. <i>Note that this product is shipped as lyophilized powder to China customers.</i>
Concentration:	lot specific
Purification:	Affinity Purified
Conjugation:	Unconjugated
Storage:	Store at -20°C as received.
Stability:	Stable for 12 months from date of receipt.
Predicted Protein Size:	41 kDa
Gene Name:	coiled-coil and C2 domain containing 1B
Database Link:	<a href="#">NP_115825</a> <a href="#">Entrez Gene 200014 Human</a> <a href="#">Q5T0F9</a>
Background:	CC2D1B belongs to the CC2D1 family. It contains 1 C2 domain. A function of Cc2d1b/Cc2d1a and their Drosophila homologue I(2)gd in D.melanogaster in Notch trafficking have been reported.
Synonyms:	RP11-155O18.2



[View online »](#)

**Note:** Immunogen Sequence Homology: Pig: 100%; Rat: 100%; Human: 100%; Mouse: 100%; Rabbit: 100%; Dog: 93%; Horse: 93%; Bovine: 93%; Guinea pig: 93%

**Product images:**



WB Suggested Anti-CC2D1B Antibody Titration:  
0.2-1 ug/ml; Positive Control: Human Placenta