

Product datasheet for **TA340206**

FBXW10 Rabbit Polyclonal Antibody

Product data:

Product Type:	Primary Antibodies
Applications:	WB
Recommended Dilution:	WB
Reactivity:	Human
Host:	Rabbit
Isotype:	IgG
Clonality:	Polyclonal
Immunogen:	The immunogen for anti-FBXW10 antibody: synthetic peptide directed towards the middle region of human FBXW10. Synthetic peptide located within the following region: RKIHLLDIIQVKAIPVEFRGHAGSVRALFLCCEENFLLSGSYDLSIRYWD
Formulation:	Liquid. Purified antibody supplied in 1x PBS buffer with 0.09% (w/v) sodium azide and 2% sucrose. <i>Note that this product is shipped as lyophilized powder to China customers.</i>
Concentration:	lot specific
Purification:	Affinity Purified
Conjugation:	Unconjugated
Storage:	Store at -20°C as received.
Stability:	Stable for 12 months from date of receipt.
Predicted Protein Size:	120 kDa
Gene Name:	F-box and WD repeat domain containing 10
Database Link:	NP_113644 Entrez Gene 10517 Human Q5XX13



[View online »](#)

Background:

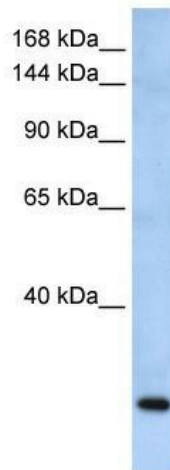
Members of the F-box protein family, such as FBXW10, are characterized by an approximately 40-amino acid F-box motif. SCF complexes, formed by SKP1 (MIM 601434), cullin (see CUL1; MIM 603134), and F-box proteins, act as protein-ubiquitin ligases. F-box proteins interact with SKP1 through the F box, and they interact with ubiquitination targets through other protein interaction domains. Western blots using two different antibodies against two unique regions of this protein target confirm the same apparent molecular weight in our tests. Members of the F-box protein family, such as FBXW10, are characterized by an approximately 40-amino acid F-box motif. SCF complexes, formed by SKP1 (MIM 601434), cullin (see CUL1; MIM 603134), and F-box proteins, act as protein-ubiquitin ligases. F-box proteins interact with SKP1 through the F box, and they interact with ubiquitination targets through other protein interaction domains (Jin et al., 2004 [PubMed 15520277]). [supplied by OMIM]

Synonyms:

Fbw10; HREP; SM2SH2; SM25H2

Note:

Immunogen Sequence Homology: Human: 100%; Mouse: 100%; Bovine: 100%; Dog: 93%; Rat: 93%; Horse: 86%; Rabbit: 86%; Pig: 77%; Guinea pig: 77%

Product images:

WB Suggested Anti-FBXW10 Antibody Titration:
0.2-1 ug/ml; ELISA Titer: 1: 12500; Positive
Control: Human Muscle