

Product datasheet for **TA340201**

TRIB1 Rabbit Polyclonal Antibody

Product data:

Product Type:	Primary Antibodies
Applications:	WB
Recommended Dilution:	WB
Reactivity:	Human
Host:	Rabbit
Isotype:	IgG
Clonality:	Polyclonal
Immunogen:	The immunogen for anti-TRIB1 antibody: synthetic peptide directed towards the C terminal of human TRIB1. Synthetic peptide located within the following region: REPSERLTAPELLHPWFESVLEPGYIDSEIGTSDQIVPEYQEDSDISSF
Formulation:	Liquid. Purified antibody supplied in 1x PBS buffer with 0.09% (w/v) sodium azide and 2% sucrose. <i>Note that this product is shipped as lyophilized powder to China customers.</i>
Concentration:	lot specific
Purification:	Affinity Purified
Conjugation:	Unconjugated
Storage:	Store at -20°C as received.
Stability:	Stable for 12 months from date of receipt.
Predicted Protein Size:	41 kDa
Gene Name:	tribbles pseudokinase 1
Database Link:	NP_079471 Entrez Gene 10221 Human Q96RU8
Background:	TRIB1 interacts with MAPK kinases and regulates activation of MAP kinases. TRIB1 may not display kinase activity.
Synonyms:	C8FW; GIG-2; GIG2; SKIP1; TRB-1; TRB1

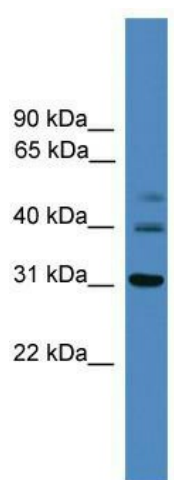


[View online »](#)

Note: Immunogen Sequence Homology: Pig: 100%; Rat: 100%; Horse: 100%; Human: 100%; Mouse: 100%; Bovine: 100%; Guinea pig: 93%

Protein Families: Druggable Genome, Protein Kinase

Product images:



WB Suggested Anti-TRIB1 Antibody Titration: 0.2-1 ug/ml; ELISA Titer: 1: 1562500; Positive Control: HeLa cell lysate. TRIB1 is supported by BioGPS gene expression data to be expressed in HeLa