

Product datasheet for **TA340200**

TRIB1 Rabbit Polyclonal Antibody

Product data:

Product Type:	Primary Antibodies
Applications:	IHC, WB
Recommended Dilution:	WB, IHC
Reactivity:	Human
Host:	Rabbit
Isotype:	IgG
Clonality:	Polyclonal
Immunogen:	The immunogen for anti-TRIB1 antibody: synthetic peptide directed towards the middle region of human TRIB1. Synthetic peptide located within the following region: TEERTQLRLESLEDTHIMKGEDDALSDKHGCPAYVSPEILNTTGTYSGKA
Formulation:	Liquid. Purified antibody supplied in 1x PBS buffer with 0.09% (w/v) sodium azide and 2% sucrose. <i>Note that this product is shipped as lyophilized powder to China customers.</i>
Concentration:	lot specific
Purification:	Affinity Purified
Conjugation:	Unconjugated
Storage:	Store at -20°C as received.
Stability:	Stable for 12 months from date of receipt.
Predicted Protein Size:	41 kDa
Gene Name:	tribbles pseudokinase 1
Database Link:	NP_079471 Entrez Gene 10221 Human Q96RU8
Background:	TRIB1 interacts with MAPK kinases and regulates activation of MAP kinases. TRIB1 may not display kinase activity.
Synonyms:	C8FW; GIG-2; GIG2; SKIP1; TRB-1; TRB1

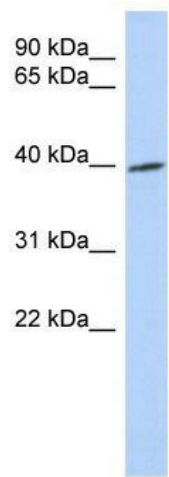


[View online »](#)

Note: Immunogen Sequence Homology: Pig: 100%; Rat: 100%; Horse: 100%; Human: 100%; Mouse: 100%; Yeast: 100%; Bovine: 100%; Rabbit: 100%; Guinea pig: 100%; Dog: 77%

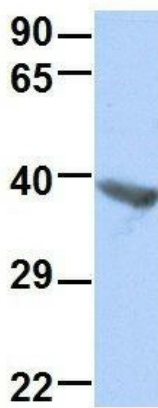
Protein Families: Druggable Genome, Protein Kinase

Product images:



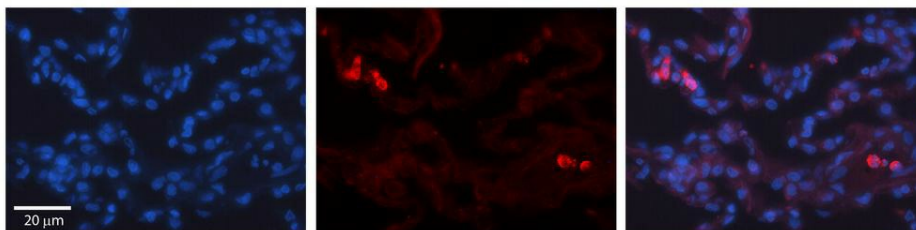
WB Suggested Anti-TRIB1 Antibody Titration: 0.2-1 ug/ml; ELISA Titer: 1: 312500; Positive Control: Human Intestine

TRIB1



Rabbit Anti-TRIB1
Sample Type: Human COLO205
Antibody Concentration: 1ug/mL

Host: Rabbit; Target Name: TRIB1; Sample Tissue: COLO205; Antibody Dilution: 1.0 ug/ml; TRIB1 is supported by BioGPS gene expression data to be expressed in COLO205



Rabbit Anti-TRIB1 Antibody; Formalin Fixed Paraffin Embedded Tissue: Human Lung Tissue; Observed Staining: Cytoplasmic in alveolar type I & II cells; Primary Antibody Concentration: 1: 100; Secondary Antibody: Donkey anti-Rabbit-Cy3; Secondary Antibody Co