

## Product datasheet for **TA340197**

### Calpain 10 (CAPN10) Rabbit Polyclonal Antibody

#### Product data:

Product Type:	Primary Antibodies
Applications:	WB
Recommended Dilution:	WB
Reactivity:	Human
Host:	Rabbit
Isotype:	IgG
Clonality:	Polyclonal
Immunogen:	The immunogen for anti-CAPN10 antibody: synthetic peptide directed towards the N terminal of human CAPN10. Synthetic peptide located within the following region: MRAGRGATPARELFRDAAFPAADSSLFCDLSTPLAQFREDITWRRPQEIC
Formulation:	Liquid. Purified antibody supplied in 1x PBS buffer with 0.09% (w/v) sodium azide and 2% sucrose. <i>Note that this product is shipped as lyophilized powder to China customers.</i>
Concentration:	lot specific
Purification:	Affinity Purified
Conjugation:	Unconjugated
Storage:	Store at -20°C as received.
Stability:	Stable for 12 months from date of receipt.
Predicted Protein Size:	58 kDa
Gene Name:	calpain 10
Database Link:	<a href="#">NP_075573</a> <a href="#">Entrez Gene 11132 Human</a> <a href="#">Q9HC96</a>



[View online »](#)

**Background:**

CAPN10 is the calcium-regulated non-lysosomal thiol-protease which catalyzes limited proteolysis of substrates involved in cytoskeletal remodeling and signal transduction. Calpains are ubiquitous, well-conserved family of calcium-dependent, cysteine proteases. The calpain proteins are heterodimers consisting of an invariant small subunit and variable large subunits. The large catalytic subunit has four domains: domain I, the N-terminal regulatory domain that is processed upon calpain activation; domain II, the protease domain; domain III, a linker domain of unknown function; and domain IV, the calmodulin-like calcium-binding domain. This gene encodes a large subunit. It is an atypical calpain in that it lacks the calmodulin-like calcium-binding domain and instead has a divergent C-terminal domain. It is similar in organization to calpains 5 and 6. This gene is associated with type 2 or non-insulin-dependent diabetes mellitus (NIDDM) and located within the NIDDM1 region. Multiple alternative transcript variants encoding different isoforms have been described for this gene.

**Synonyms:**

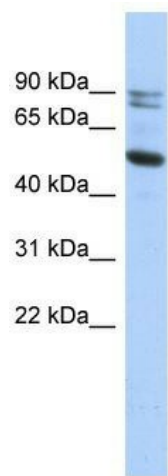
CANP10; NIDDM1

**Note:**

Immunogen Sequence Homology: Dog: 100%; Human: 100%; Rabbit: 100%; Pig: 93%; Rat: 93%; Mouse: 93%; Guinea pig: 93%; Bovine: 92%

**Protein Families:**

Druggable Genome, Protease

**Product images:**

WB Suggested Anti-CAPN10 Antibody Titration:  
0.2-1 ug/ml; ELISA Titer: 1: 1562500; Positive  
Control: HT1080 cell lysate