

Product datasheet for **TA340194**

EEF1B2 Rabbit Polyclonal Antibody

Product data:

Product Type:	Primary Antibodies
Applications:	WB
Recommended Dilution:	WB
Reactivity:	Human
Host:	Rabbit
Isotype:	IgG
Clonality:	Polyclonal
Immunogen:	The immunogen for anti-EEF1B2 antibody: synthetic peptide directed towards the middle region of human EEF1B2. Synthetic peptide located within the following region: VKKALGKYGPADVEDTTGSGATDSKDDDDIDLFGSDDEEESEAKRLREE
Formulation:	Liquid. Purified antibody supplied in 1x PBS buffer with 0.09% (w/v) sodium azide and 2% sucrose. <i>Note that this product is shipped as lyophilized powder to China customers.</i>
Concentration:	lot specific
Purification:	Affinity Purified
Conjugation:	Unconjugated
Storage:	Store at -20°C as received.
Stability:	Stable for 12 months from date of receipt.
Predicted Protein Size:	25 kDa
Gene Name:	eukaryotic translation elongation factor 1 beta 2
Database Link:	NP_066944 Entrez Gene 1933 Human P24534
Background:	EEF1B2 is a translation elongation factor. The protein is a guanine nucleotide exchange factor involved in the transfer of aminoacylated tRNAs to the ribosome. This gene encodes a translation elongation factor. The protein is a guanine nucleotide exchange factor involved in the transfer of aminoacylated tRNAs to the ribosome. Alternative splicing results in three transcript variants which differ only in the 5' UTR.

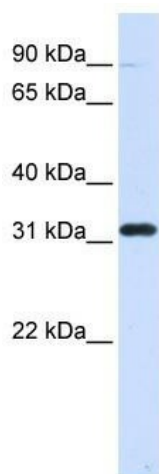


[View online »](#)

Synonyms: EEF1B; EEF1B1; EF1B

Note: Immunogen Sequence Homology: Horse: 100%; Human: 100%; Rabbit: 100%; Dog: 93%; Pig: 93%; Guinea pig: 93%; Goat: 86%; Bovine: 86%; Mouse: 85%

Product images:



WB Suggested Anti-EEF1B2 Antibody Titration:
0.2-1 ug/ml; ELISA Titer: 1: 12500; Positive
Control: 293T cell lysate EEF1B2 is supported by
BioGPS gene expression data to be expressed in
HEK293T