

Product datasheet for **TA340193**

CRY2 Rabbit Polyclonal Antibody

Product data:

Product Type:	Primary Antibodies
Applications:	WB
Recommended Dilution:	WB
Reactivity:	Human
Host:	Rabbit
Isotype:	IgG
Clonality:	Polyclonal
Immunogen:	The immunogen for anti-CRY2 antibody: synthetic peptide directed towards the N terminal of human CRY2. Synthetic peptide located within the following region: IELNGQKPPLTYKRFQAIISRMELPKKPVGLVTSQQMESCR AEIQENHDE
Formulation:	Liquid. Purified antibody supplied in 1x PBS buffer with 0.09% (w/v) sodium azide and 2% sucrose. <i>Note that this product is shipped as lyophilized powder to China customers.</i>
Concentration:	lot specific
Purification:	Affinity Purified
Conjugation:	Unconjugated
Storage:	Store at -20°C as received.
Stability:	Stable for 12 months from date of receipt.
Predicted Protein Size:	67 kDa
Gene Name:	cryptochrome circadian clock 2
Database Link:	NP_066940 Entrez Gene 1408 Human Q49AN0



[View online »](#)

Background: CRY2 is a blue light-dependent regulator of the circadian feedback loop. CRY2 inhibits CLOCK NPAS2-ARNTL E box-mediated transcription. CRY2 acts, in conjunction with CRY1, in maintaining period length and circadian rhythmicity. CRY2 has no photolyase activity. CRY2 is capable of translocating circadian clock core proteins such as PER proteins to the nucleus. CRY2 may inhibit CLOCK NPAS2-ARNTL transcriptional activity through stabilizing the unphosphorylated form of ARNTL.

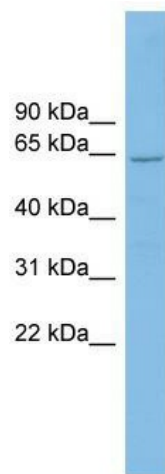
Synonyms: HCRY2; PHLL2

Note: Immunogen Sequence Homology: Dog: 100%; Pig: 100%; Rat: 100%; Horse: 100%; Human: 100%; Mouse: 100%; Sheep: 100%; Bovine: 100%; Rabbit: 100%; Guinea pig: 100%; Zebrafish: 86%

Protein Families: Druggable Genome

Protein Pathways: Circadian rhythm - mammal

Product images:



WB Suggested Anti-CRY2 Antibody Titration: 0.2-1 ug/ml; ELISA Titer: 1: 62500; Positive Control: U937 cell lysate