

Product datasheet for **TA340187**

ECT2 Rabbit Polyclonal Antibody

Product data:

Product Type:	Primary Antibodies
Applications:	WB
Recommended Dilution:	WB
Reactivity:	Human
Host:	Rabbit
Isotype:	IgG
Clonality:	Polyclonal
Immunogen:	The immunogen for anti-ECT2 antibody: synthetic peptide directed towards the middle region of human ECT2. Synthetic peptide located within the following region: PECGRQSLVELLIRPVQRLPSVALLNLDLKKHTADENPDKSTLEKAIGSL
Formulation:	Liquid. Purified antibody supplied in 1x PBS buffer with 0.09% (w/v) sodium azide and 2% sucrose. <i>Note that this product is shipped as lyophilized powder to China customers.</i>
Concentration:	lot specific
Purification:	Affinity Purified
Conjugation:	Unconjugated
Storage:	Store at -20°C as received.
Stability:	Stable for 12 months from date of receipt.
Predicted Protein Size:	100 kDa
Gene Name:	epithelial cell transforming 2
Database Link:	NP_060568 Entrez Gene 1894 Human Q9H8V3



[View online »](#)

Background:

ECT2 is a transforming protein that is related to Rho-specific exchange factors and yeast cell cycle regulators. The expression of ECT2 is elevated with the onset of DNA synthesis and remains elevated during G2 and M phases. In situ hybridization analysis showed that expression is at a high level in cells undergoing mitosis in regenerating liver. Thus, this protein is expressed in a cell cycle-dependent manner during liver regeneration, and is thought to have an important role in the regulation of cytokinesis. Western blots using two different antibodies against two unique regions of this protein target confirm the same apparent molecular weight in our tests. The protein encoded by this gene is a transforming protein that is related to Rho-specific exchange factors and yeast cell cycle regulators. The expression of this gene is elevated with the onset of DNA synthesis and remains elevated during G2 and M phases. In situ hybridization analysis showed that expression is at a high level in cells undergoing mitosis in regenerating liver. Thus, this protein is expressed in a cell cycle-dependent manner during liver regeneration, and is thought to have an important role in the regulation of cytokinesis. Publication Note: This RefSeq record includes a subset of the publications that are available for this gene. Please see the Entrez Gene record to access additional publications.

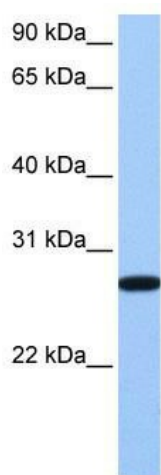
Synonyms:

ARHGEF31

Note: Immunogen Sequence Homology: Pig: 100%; Rat: 100%; Human: 100%; Mouse: 100%; Rabbit: 100%; Guinea pig: 100%; Horse: 93%; Dog: 86%; Bovine: 86%; Zebrafish: 79%

Protein Families:

Druggable Genome

Product images:


WB Suggested Anti-ECT2 Antibody Titration: 0.2-1 ug/ml; Positive Control: Hela cell lysate