

## Product datasheet for **TA340183**

### FILIP1L Rabbit Polyclonal Antibody

#### Product data:

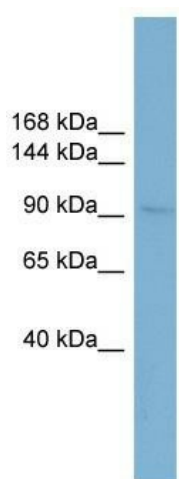
Product Type:	Primary Antibodies
Applications:	WB
Recommended Dilution:	WB
Reactivity:	Human
Host:	Rabbit
Isotype:	IgG
Clonality:	Polyclonal
Immunogen:	The immunogen for anti-FILIP1L antibody: synthetic peptide directed towards the middle region of human FILIP1L. Synthetic peptide located within the following region: KSLRPSLNGRRISDPQVFSKEVQTEAVDNEPPDYKSLIPLERAVINGQLY
Formulation:	Liquid. Purified antibody supplied in 1x PBS buffer with 0.09% (w/v) sodium azide and 2% sucrose.
Concentration:	lot specific
Purification:	Affinity Purified
Conjugation:	Unconjugated
Storage:	Store at -20°C as received.
Stability:	Stable for 12 months from date of receipt.
Predicted Protein Size:	102 kDa
Gene Name:	filamin A interacting protein 1-like
Database Link:	<a href="#">NP_055705</a> <a href="#">Entrez Gene 11259 Human</a> <a href="#">Q4L180</a>
Background:	FILIP1L acts as a regulator of the antiangiogenic activity on endothelial cells. When overexpressed in endothelial cells, FILIP1L leads to inhibition of cell proliferation and migration and an increase in apoptosis. FILIP1L inhibits melanoma growth when e
Synonyms:	DOC-1; DOC1; GIP90; GIP130



[View online »](#)

**Note:** Immunogen Sequence Homology: Pig: 100%; Rat: 100%; Horse: 100%; Human: 100%; Mouse: 100%; Bovine: 100%; Rabbit: 100%; Guinea pig: 100%; Dog: 93%

**Product images:**



WB Suggested Anti-FILIP1L Antibody Titration:  
0.2-1 ug/ml; Positive Control: NCI-H226 cell lysate