

Product datasheet for **TA340182**

PITRM1 Rabbit Polyclonal Antibody

Product data:

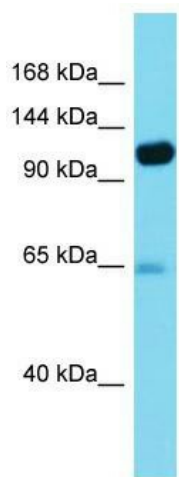
Product Type:	Primary Antibodies
Applications:	WB
Recommended Dilution:	WB
Reactivity:	Human
Host:	Rabbit
Isotype:	IgG
Clonality:	Polyclonal
Immunogen:	The immunogen for Anti-PITRM1 antibody is: synthetic peptide directed towards the N-terminal region of Human PITRM1. Synthetic peptide located within the following region: RDPFFKMLNRSLSFTMNAFTASDYTLYPFSTQNPKDFQNLLSVYLDATFF
Formulation:	Liquid. Purified antibody supplied in 1x PBS buffer with 0.09% (w/v) sodium azide and 2% sucrose. <i>Note that this product is shipped as lyophilized powder to China customers.</i>
Concentration:	lot specific
Purification:	Affinity Purified
Conjugation:	Unconjugated
Storage:	Store at -20°C as received.
Stability:	Stable for 12 months from date of receipt.
Predicted Protein Size:	103 kDa
Gene Name:	pitrilysin metallopeptidase 1
Database Link:	NP_001229238 Entrez Gene 10531 Human Q5JRX3
Background:	The function of this protein remains unknown.
Synonyms:	MP1; PreP
Note:	Immunogen Sequence Homology: Dog: 100%; Pig: 100%; Rat: 100%; Human: 100%; Mouse: 100%; Bovine: 100%; Rabbit: 100%; Horse: 93%; Zebrafish: 93%; Guinea pig: 93%



[View online »](#)

Protein Families: Druggable Genome, Protease

Product images:



Host: Rabbit; Target Name: PITRM1; Sample Tissue: Thyroid Tumor lysates; Antibody Dilution: 1.0 ug/ml