

## Product datasheet for TA340177

### SPON2 Rabbit Polyclonal Antibody

#### Product data:

Product Type:	Primary Antibodies
Applications:	WB
Recommended Dilution:	WB
Reactivity:	Human
Host:	Rabbit
Isotype:	IgG
Clonality:	Polyclonal
Immunogen:	The immunogen for anti-SPON2 antibody: synthetic peptide directed towards the N terminal of human SPON2. Synthetic peptide located within the following region: CSARAPAKYSITFTGKWSQTAFPKQYPLFRPPAQWSSLLGAAHSSDYSMW
Formulation:	Liquid. Purified antibody supplied in 1x PBS buffer with 0.09% (w/v) sodium azide and 2% sucrose. <i>Note that this product is shipped as lyophilized powder to China customers.</i>
Concentration:	lot specific
Purification:	Affinity Purified
Conjugation:	Unconjugated
Storage:	Store at -20°C as received.
Stability:	Stable for 12 months from date of receipt.
Predicted Protein Size:	36 kDa
Gene Name:	spondin 2
Database Link:	<a href="#">NP_036577</a> <a href="#">Entrez Gene 10417 Human</a> <a href="#">Q9BUD6</a>
Background:	SPON2 is a cell adhesion protein that promote adhesion and outgrowth of hippocampal embryonic neurons. Binds directly to bacteria and their components and functions as an opsonin for macrophage phagocytosis of bacteria. It is essential in the initiation of the innate immune response and represents a unique pattern-recognition molecule in the ECM for microbial pathogens.



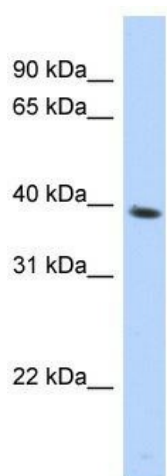
[View online »](#)

**Synonyms:** DIL-1; DIL1; M-SPONDIN; MINDIN

**Note:** Immunogen Sequence Homology: Pig: 100%; Rat: 100%; Horse: 100%; Human: 100%; Mouse: 100%; Bovine: 100%; Zebrafish: 100%; Guinea pig: 100%

**Protein Families:** Secreted Protein

### Product images:



WB Suggested Anti-SPON2 Antibody Titration:  
0.2-1 ug/ml; ELISA Titer: 1: 312500; Positive  
Control: Transfected 293T