

Product datasheet for **TA340175**

Gabarapl2 Rabbit Polyclonal Antibody

Product data:

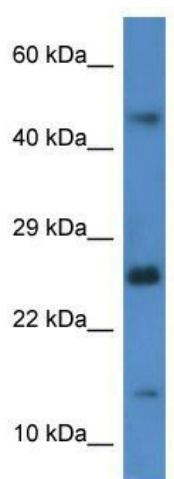
Product Type:	Primary Antibodies
Applications:	WB
Recommended Dilution:	WB
Reactivity:	Rat
Host:	Rabbit
Isotype:	IgG
Clonality:	Polyclonal
Immunogen:	The immunogen for anti-Gabarapl2 antibody: synthetic peptide corresponding to a region of Rat. Synthetic peptide located within the following region: KRIQLPSEKAIFLVDKTPQSSLTMGQLYEKEKDEDGFLYVAYSGENTF
Formulation:	Liquid. Purified antibody supplied in 1x PBS buffer with 0.09% (w/v) sodium azide and 2% sucrose. <i>Note that this product is shipped as lyophilized powder to China customers.</i>
Concentration:	lot specific
Purification:	Affinity Purified
Conjugation:	Unconjugated
Storage:	Store at -20°C as received.
Stability:	Stable for 12 months from date of receipt.
Predicted Protein Size:	14 kDa
Gene Name:	GABA(A) receptor-associated protein like 2
Database Link:	NP_073197 Entrez Gene 64670 Rat P60522
Background:	As a mouse homolog, Gabarapl2 may function as a soluble transport factor and/or a GABA(A) receptor linker.
Synonyms:	ATG8; FLC3A; GATE-16; GATE16; GEF-2; GEF2



[View online »](#)

Note: Immunogen Sequence Homology: Dog: 100%; Pig: 100%; Rat: 100%; Goat: 100%; Horse: 100%; Human: 100%; Mouse: 100%; Bovine: 100%; Rabbit: 100%; Guinea pig: 100%; Zebrafish: 93%

Product images:



WB Suggested Anti-Gabarapl2 Antibody; Titration: 1.0 ug/ml; Positive Control: Rat Brain