

Product datasheet for **TA340174**

GABARAPL2 Rabbit Polyclonal Antibody

Product data:

Product Type:	Primary Antibodies
Applications:	WB
Recommended Dilution:	WB
Reactivity:	Human
Host:	Rabbit
Isotype:	IgG
Clonality:	Polyclonal
Immunogen:	The immunogen for anti-GABARAPL2 antibody: synthetic peptide directed towards the N terminal of human GABARAPL2. Synthetic peptide located within the following region: KWMFKEDHSLEHRCVESAKIRAKYPDRVPVIVEKVSQSQIVDIDKRKYL
Formulation:	Liquid. Purified antibody supplied in 1x PBS buffer with 0.09% (w/v) sodium azide and 2% sucrose. <i>Note that this product is shipped as lyophilized powder to China customers.</i>
Concentration:	lot specific
Purification:	Affinity Purified
Conjugation:	Unconjugated
Storage:	Store at -20°C as received.
Stability:	Stable for 12 months from date of receipt.
Predicted Protein Size:	14 kDa
Gene Name:	GABA type A receptor associated protein like 2
Database Link:	NP_009216 Entrez Gene 11345 Human P60520
Background:	GABARAPL2 belongs to the MAP1 LC3 family. It modulates intra-Golgi transport through coupling between NSF activity and SNAREs activation. The protein first stimulates the ATPase activity of NSF which in turn stimulates the association with GOSR1.
Synonyms:	ATG8; ATG8C; GATE-16; GATE16; GEF-2; GEF2

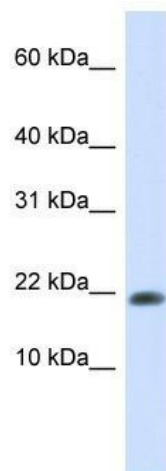


[View online »](#)

Note: Immunogen Sequence Homology: Dog: 100%; Pig: 100%; Rat: 100%; Goat: 100%; Horse: 100%; Human: 100%; Mouse: 100%; Bovine: 100%; Rabbit: 100%; Guinea pig: 100%; Zebrafish: 92%

Protein Pathways: Regulation of autophagy

Product images:



WB Suggested Anti-GABARAPL2 Antibody
Titration: 0.2-1 ug/ml; ELISA Titer: 1: 62500;
Positive Control: 293T cell lysate GABARAPL2 is supported by BioGPS gene expression data to be expressed in HEK293T