

Product datasheet for **TA340173**

TWF2 Rabbit Polyclonal Antibody

Product data:

Product Type:	Primary Antibodies
Applications:	WB
Recommended Dilution:	WB
Reactivity:	Human
Host:	Rabbit
Isotype:	IgG
Clonality:	Polyclonal
Immunogen:	The immunogen for Anti-TWF2 antibody is: synthetic peptide directed towards the C-terminal region of Human TWF2. Synthetic peptide located within the following region: IGDGAELTAEFLYDEVHPKQHAFKQAFKPKGPGGKRGHKRLIRGPGENG
Formulation:	Liquid. Purified antibody supplied in 1x PBS buffer with 0.09% (w/v) sodium azide and 2% sucrose. <i>Note that this product is shipped as lyophilized powder to China customers.</i>
Concentration:	lot specific
Purification:	Affinity Purified
Conjugation:	Unconjugated
Storage:	Store at -20°C as received.
Stability:	Stable for 12 months from date of receipt.
Predicted Protein Size:	38 kDa
Gene Name:	twinfilin actin binding protein 2
Database Link:	NP_009215 Entrez Gene 11344 Human Q6IBS0
Background:	The protein encoded by this gene was identified by its interaction with the catalytic domain of protein kinase C-zeta. The encoded protein contains an actin-binding site and an ATP-binding site. It is most closely related to twinfilin (PTK9), a conserved actin monomer-binding protein.
Synonyms:	A6r; A6RP; MSTP011; PTK9L

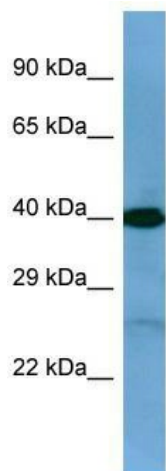


[View online »](#)

Note: Immunogen Sequence Homology: Dog: 100%; Pig: 100%; Rat: 100%; Horse: 100%; Human: 100%; Mouse: 100%; Rabbit: 100%; Guinea pig: 100%; Bovine: 86%; Zebrafish: 86%

Protein Families: Druggable Genome

Product images:



Host: Rabbit; Target Name: TWF2; Sample Tissue: PANC1 Whole Cell lysates; Antibody Dilution: 1.0 ug/ml