

## Product datasheet for **TA340171**

### Vps45 Rabbit Polyclonal Antibody

#### Product data:

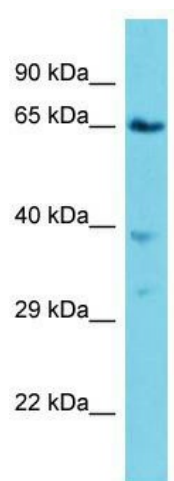
Product Type:	Primary Antibodies
Applications:	WB
Recommended Dilution:	WB
Reactivity:	Mouse
Host:	Rabbit
Isotype:	IgG
Clonality:	Polyclonal
Immunogen:	The immunogen for Anti-Vps45 antibody is: synthetic peptide directed towards the C-terminal region of Mouse Vps45. Synthetic peptide located within the following region: PFLHETLDHLLIKGRLKENLYPYLGPSTLRDRPQDIIVFIIGGATYEEALT
Formulation:	Liquid. Purified antibody supplied in 1x PBS buffer with 0.09% (w/v) sodium azide and 2% sucrose. <i>Note that this product is shipped as lyophilized powder to China customers.</i>
Concentration:	lot specific
Purification:	Affinity Purified
Conjugation:	Unconjugated
Storage:	Store at -20°C as received.
Stability:	Stable for 12 months from date of receipt.
Predicted Protein Size:	63 kDa
Gene Name:	vacuolar protein sorting 45
Database Link:	<a href="#">NP_038869</a> <a href="#">Entrez Gene 22365 Mouse P97390</a>
Background:	Vps45 may play a role in vesicle-mediated protein trafficking from the Golgi stack through the trans-Golgi network.
Synonyms:	h-vps45; H1; H1VPS45; hIVps45; VPS45A; VPS45B; VPS54A; VSP45; VSP45A



[View online »](#)

**Note:** Immunogen Sequence Homology: Dog: 100%; Pig: 100%; Rat: 100%; Horse: 100%; Human: 100%; Mouse: 100%; Bovine: 100%; Zebrafish: 86%; Guinea pig: 86%

**Product images:**



Host: Rabbit; Target Name: Vps45; Sample Tissue: Mouse Lung lysates; Antibody Dilution: 1.0 ug/ml