

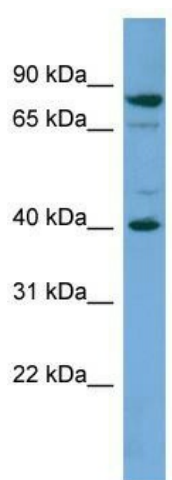
Product datasheet for TA340169

MA2 (PNMA2) Rabbit Polyclonal Antibody

Product data:

Product Type:	Primary Antibodies
Applications:	WB
Recommended Dilution:	WB
Reactivity:	Human
Host:	Rabbit
Isotype:	IgG
Clonality:	Polyclonal
Immunogen:	The immunogen for anti-PNMA2 antibody: synthetic peptide directed towards the middle region of human PNMA2. Synthetic peptide located within the following region: ELKDQGPPPSFLELMKVIREEEEEEASFENESIEEPEERDGYGRWNHEGD
Formulation:	Liquid. Purified antibody supplied in 1x PBS buffer with 0.09% (w/v) sodium azide and 2% sucrose.
Concentration:	lot specific
Purification:	Affinity Purified
Conjugation:	Unconjugated
Storage:	Store at -20°C as received.
Stability:	Stable for 12 months from date of receipt.
Predicted Protein Size:	41 kDa
Gene Name:	paraneoplastic Ma antigen 2
Database Link:	NP_009188 Entrez Gene 10687 Human Q9UL42
Background:	The function of PNMA2 remains unknown.
Synonyms:	MA2; MM2; RGAG2
Note:	Immunogen Sequence Homology: Dog: 100%; Human: 100%; Pig: 79%; Horse: 79%


[View online »](#)

Product images:

WB Suggested Anti-PNMA2 Antibody Titration:
0.2-1 ug/ml; ELISA Titer: 1: 1562500; Positive
Control: HepG2 cell lysate