

Product datasheet for **TA340166**

KLHL2 Rabbit Polyclonal Antibody

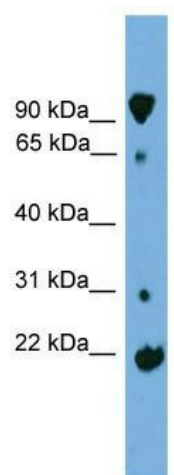
Product data:

Product Type:	Primary Antibodies
Applications:	WB
Recommended Dilution:	WB
Reactivity:	Human
Host:	Rabbit
Isotype:	IgG
Clonality:	Polyclonal
Immunogen:	The immunogen for anti-KLHL2 antibody: synthetic peptide directed towards the middle region of human KLHL2. Synthetic peptide located within the following region: TYAEQHFADVVLSEEFNLNLGIEQVCSLISSDKLTISSEEKVFEAVIAWVN
Formulation:	Liquid. Purified antibody supplied in 1x PBS buffer with 0.09% (w/v) sodium azide and 2% sucrose. <i>Note that this product is shipped as lyophilized powder to China customers.</i>
Concentration:	lot specific
Purification:	Affinity Purified
Conjugation:	Unconjugated
Storage:	Store at -20°C as received.
Stability:	Stable for 12 months from date of receipt.
Predicted Protein Size:	66
Gene Name:	kelch like family member 2
Database Link:	NP_009177 Entrez Gene 11275 Human O95198
Background:	KLHL2 may play a role in organizing the actin cytoskeleton of the brain cells.
Synonyms:	ABP-KELCH; MAV; MAYVEN
Note:	Immunogen Sequence Homology: Dog: 100%; Pig: 100%; Rat: 100%; Horse: 100%; Human: 100%; Mouse: 100%; Bovine: 100%; Rabbit: 100%; Guinea pig: 100%; Zebrafish: 93%



[View online »](#)

Product images:



WB Suggested Anti-KLHL2 Antibody Titration: 0.2-1 ug/ml; ELISA Titer: 1: 312500; Positive Control: HepG2 cell lysate