

Product datasheet for **TA340165**

Calcium binding protein P22 (CHP1) Rabbit Polyclonal Antibody

Product data:

Product Type:	Primary Antibodies
Applications:	IHC, WB
Recommended Dilution:	WB, IHC
Reactivity:	Human
Host:	Rabbit
Isotype:	IgG
Clonality:	Polyclonal
Immunogen:	The immunogen for anti-CHP antibody: synthetic peptide directed towards the N terminal of human CHP. Synthetic peptide located within the following region: FTSLDKGENGTLSREDFQRIPELAINPLGDRIINAFFPEGEDQVNFRGFM
Formulation:	Liquid. Purified antibody supplied in 1x PBS buffer with 0.09% (w/v) sodium azide and 2% sucrose. <i>Note that this product is shipped as lyophilized powder to China customers.</i>
Concentration:	lot specific
Purification:	Affinity Purified
Conjugation:	Unconjugated
Storage:	Store at -20°C as received.
Stability:	Stable for 12 months from date of receipt.
Predicted Protein Size:	22 kDa
Gene Name:	calcineurin like EF-hand protein 1
Database Link:	NP_009167 Entrez Gene 11261 Human Q99653
Background:	This gene encodes a phosphoprotein that binds to the Na ⁺ /H ⁺ exchanger NHE1. This protein serves as an essential cofactor which supports the physiological activity of NHE family members and may play a role in the mitogenic regulation of NHE1. The protein shares similarity with calcineurin B and calmodulin and it is also known to be an endogenous inhibitor of calcineurin activity.



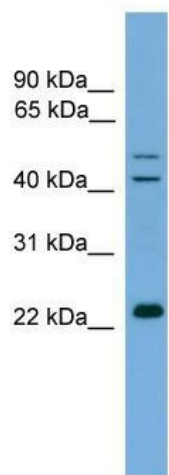
[View online »](#)

Synonyms: CHP; p22; p24; Sid470p; SLC9A1BP

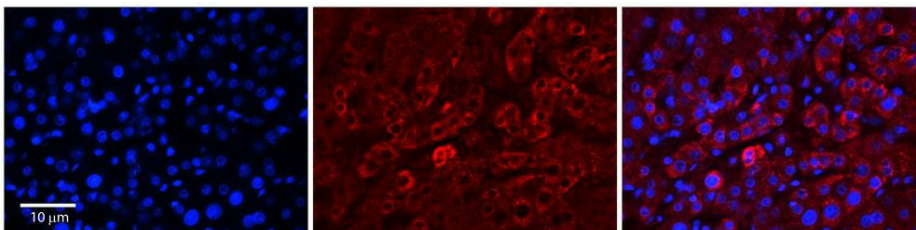
Note: Immunogen Sequence Homology: Dog: 100%; Pig: 100%; Rat: 100%; Horse: 100%; Human: 100%; Mouse: 100%; Bovine: 100%; Rabbit: 100%; Guinea pig: 100%; Zebrafish: 93%

Protein Pathways: Alzheimer's disease, Amyotrophic lateral sclerosis (ALS), Apoptosis, Axon guidance, B cell receptor signaling pathway, Calcium signaling pathway, Long-term potentiation, MAPK signaling pathway, Natural killer cell mediated cytotoxicity, Oocyte meiosis, T cell receptor signaling pathway, VEGF signaling pathway, Wnt signaling pathway

Product images:



WB Suggested Anti-CHP Antibody Titration: 0.2-1 ug/ml; Positive Control: 721_B cell lysate CHP1 is supported by BioGPS gene expression data to be expressed in 721_B



Rabbit Anti-CHP1 Antibody; Formalin Fixed Paraffin Embedded Tissue: Human Adult Liver; Observed Staining: Cytoplasm and Membrane, moderate signal, low tissue distribution; Primary Antibody Concentration: 1: 100; Secondary Antibody: Donkey anti-Rabbit-Cy3;