

Product datasheet for **TA340163**

Neurexophilin 3 (NXPH3) Rabbit Polyclonal Antibody

Product data:

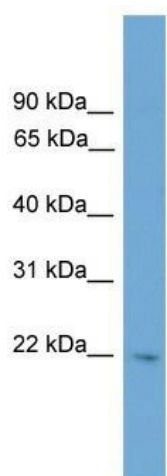
Product Type:	Primary Antibodies
Applications:	WB
Recommended Dilution:	WB
Reactivity:	Human
Host:	Rabbit
Isotype:	IgG
Clonality:	Polyclonal
Immunogen:	The immunogen for anti-NXPH3 antibody: synthetic peptide directed towards the N terminal of human NXPH3. Synthetic peptide located within the following region: RDDHEGQPRPRVPRKRGHISPKSRPMANSTLLGLLAPPGEAWGILGQPPN
Formulation:	Liquid. Purified antibody supplied in 1x PBS buffer with 0.09% (w/v) sodium azide and 2% sucrose. <i>Note that this product is shipped as lyophilized powder to China customers.</i>
Concentration:	lot specific
Purification:	Affinity Purified
Conjugation:	Unconjugated
Storage:	Store at -20°C as received.
Stability:	Stable for 12 months from date of receipt.
Predicted Protein Size:	28 kDa
Gene Name:	neurexophilin 3
Database Link:	NP_009156 Entrez Gene 11248 Human O95157
Background:	NXPH3 may be signaling molecules that resemble neuropeptides. Ligand for alpha-neurexins.
Synonyms:	NPH3
Note:	Immunogen Sequence Homology: Dog: 100%; Rat: 100%; Horse: 100%; Human: 100%; Mouse: 100%; Bovine: 100%; Pig: 93%; Rabbit: 93%; Guinea pig: 92%



[View online »](#)

Protein Families: Secreted Protein

Product images:



WB Suggested Anti-NXPH3 Antibody Titration:
0.2-1 ug/ml; ELISA Titer: 1: 1562500; Positive
Control: A549 cell lysate