

Product datasheet for **TA340156**

WW domain binding protein 4 (WBP4) Rabbit Polyclonal Antibody

Product data:

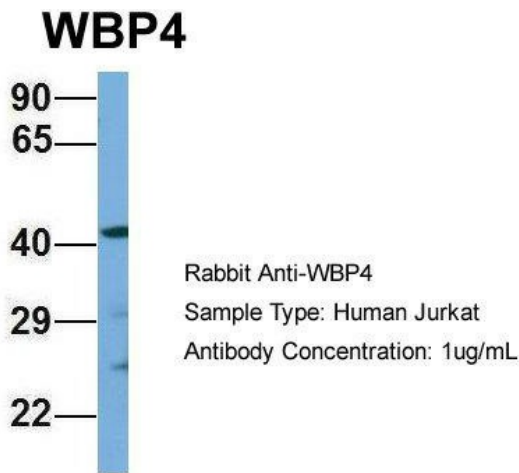
Product Type:	Primary Antibodies
Applications:	WB
Recommended Dilution:	WB
Reactivity:	Human
Host:	Rabbit
Isotype:	IgG
Clonality:	Polyclonal
Immunogen:	The immunogen for anti-WBP4 antibody: synthetic peptide directed towards the N terminal of human WBP4. Synthetic peptide located within the following region: MADYWKSQPKKFCDYCKCWIADNRPSVEFHERGKNHKENVAKRISEIKQK
Formulation:	Liquid. Purified antibody supplied in 1x PBS buffer with 0.09% (w/v) sodium azide and 2% sucrose. <i>Note that this product is shipped as lyophilized powder to China customers.</i>
Concentration:	lot specific
Purification:	Affinity Purified
Conjugation:	Unconjugated
Storage:	Store at -20°C as received.
Stability:	Stable for 12 months from date of receipt.
Predicted Protein Size:	42 kDa
Gene Name:	WW domain binding protein 4
Database Link:	NP_009118 Entrez Gene 11193 Human O75554
Background:	This gene encodes WW domain-containing binding protein 4. The WW domain represents a small and compact globular structure that interacts with proline-rich ligands. This encoded protein is a general spliceosomal protein that may play a role in cross-intron bridging of U1 and U2 snRNPs in the spliceosomal complex A.
Synonyms:	FBP21



[View online »](#)

Note: Immunogen Sequence Homology: Dog: 100%; Pig: 100%; Rat: 100%; Horse: 100%; Human: 100%; Mouse: 100%; Rabbit: 100%; Guinea pig: 100%; Bovine: 93%; Zebrafish: 93%

Product images:



WB Suggested Anti-WBP4 Antibody Titration: 0.2-1 ug/ml; ELISA Titer: 1: 312500; Positive Control: 721_B cell lysate WBP4 is strongly supported by BioGPS gene expression data to be expressed in Human 721_B cells



Host: Rabbit; Target Name: WBP4; Sample Tissue: Jurkat; Antibody Dilution: 1.0 ug/ml; WBP4 is strongly supported by BioGPS gene expression data to be expressed in Jurkat