

## Product datasheet for **TA340155**

### PRSS23 Rabbit Polyclonal Antibody

#### Product data:

Product Type:	Primary Antibodies
Applications:	WB
Recommended Dilution:	WB
Reactivity:	Human
Host:	Rabbit
Isotype:	IgG
Clonality:	Polyclonal
Immunogen:	The immunogen for anti-PRSS23 antibody: synthetic peptide directed towards the C terminal of human PRSS23. Synthetic peptide located within the following region: VSPPAKQLPGGRIHFSGYDNDRPGNLVYRFCDVKDETYDILLYQQCDAQPG
Formulation:	Liquid. Purified antibody supplied in 1x PBS buffer with 0.09% (w/v) sodium azide and 2% sucrose. <i>Note that this product is shipped as lyophilized powder to China customers.</i>
Concentration:	lot specific
Purification:	Affinity Purified
Conjugation:	Unconjugated
Storage:	Store at -20°C as received.
Stability:	Stable for 12 months from date of receipt.
Predicted Protein Size:	41 kDa
Gene Name:	protease, serine 23
Database Link:	<a href="#">NP_009104</a> <a href="#">Entrez Gene 11098 Human O95084</a>
Background:	This gene encodes a member of the trypsin family of serine proteases. Mouse studies found a decrease of mRNA levels after ovulation was induced. This gene seems to be highly conserved in vertebrates and may be an important ovarian protease.
Synonyms:	SIG13; SPUVE; ZSIG13

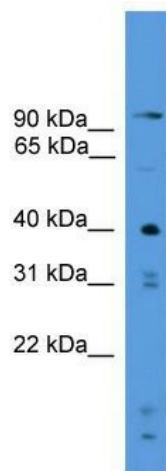


[View online »](#)

**Note:** Immunogen Sequence Homology: Dog: 100%; Pig: 100%; Rat: 100%; Horse: 100%; Human: 100%; Mouse: 100%; Bovine: 100%; Rabbit: 100%; Guinea pig: 100%; Zebrafish: 90%

**Protein Families:** Druggable Genome, Protease, Secreted Protein

**Product images:**



WB Suggested Anti-PRSS23 Antibody Titration:  
0.2-1 ug/ml; ELISA Titer: 1: 312500; Positive  
Control: HepG2 cell lysate