

Product datasheet for **TA340154**

NUP50 Rabbit Polyclonal Antibody

Product data:

Product Type:	Primary Antibodies
Applications:	IF, WB
Recommended Dilution:	WB, IF
Reactivity:	Human
Host:	Rabbit
Isotype:	IgG
Clonality:	Polyclonal
Immunogen:	The immunogen for anti-NUP50 antibody: synthetic peptide directed towards the C terminal of human NUP50. Synthetic peptide located within the following region: TTQSKPVSSPFPTKPLEGQAEGDSGECKGGDEEENDEPPKVVVTEVKEED
Formulation:	Liquid. Purified antibody supplied in 1x PBS buffer with 0.09% (w/v) sodium azide and 2% sucrose. <i>Note that this product is shipped as lyophilized powder to China customers.</i>
Concentration:	lot specific
Purification:	Affinity Purified
Conjugation:	Unconjugated
Storage:	Store at -20°C as received.
Stability:	Stable for 12 months from date of receipt.
Predicted Protein Size:	50 kDa
Gene Name:	nucleoporin 50kDa
Database Link:	NP_009103 Entrez Gene 10762 Human Q9UKX7



[View online »](#)

Background:

The nuclear pore complex is a massive structure that extends across the nuclear envelope, forming a gateway that regulates the flow of macromolecules between the nucleus and the cytoplasm. Nucleoporins are the main components of the nuclear pore complex in eukaryotic cells. NUP50 is a member of the FG-repeat containing nucleoporins that functions as a soluble cofactor in importin-alpha:beta-mediated nuclear protein import. The nuclear pore complex is a massive structure that extends across the nuclear envelope, forming a gateway that regulates the flow of macromolecules between the nucleus and the cytoplasm. Nucleoporins are the main components of the nuclear pore complex in eukaryotic cells. The protein encoded by this gene is a member of the FG-repeat containing nucleoporins that functions as a soluble cofactor in importin-alpha:beta-mediated nuclear protein import. Pseudogenes of this gene are found on chromosomes 5, 6, and 14. Two transcript variants encoding different isoforms have been found for this gene.

Synonyms:

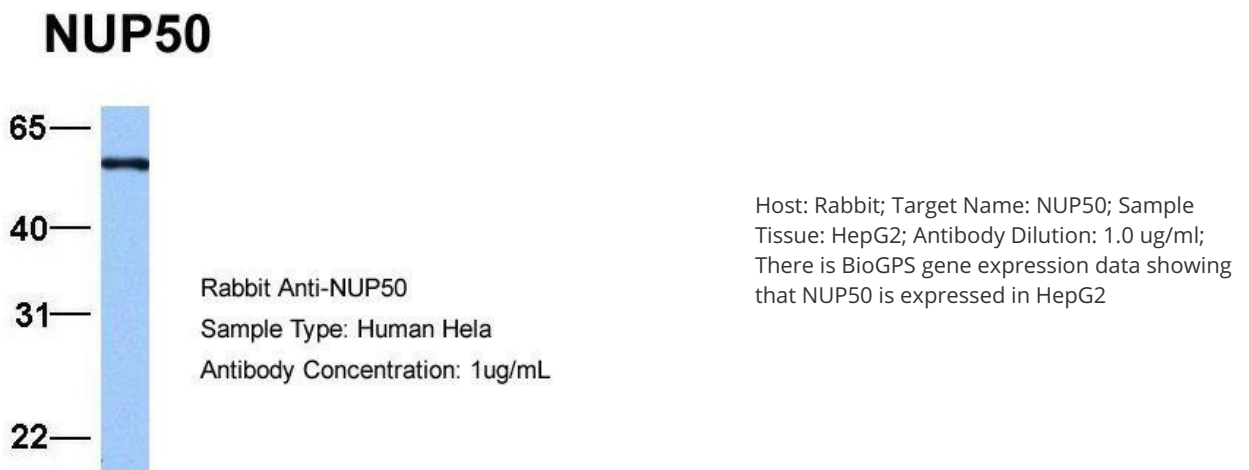
NPAP60; NPAP60L

Note:

Immunogen Sequence Homology: Dog: 100%; Pig: 100%; Horse: 100%; Human: 100%; Bovine: 100%; Rabbit: 100%; Rat: 92%; Mouse: 91%; Guinea pig: 85%; Yeast: 80%

Protein Families:

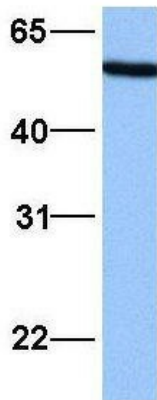
Stem cell - Pluripotency

Product images:




WB Suggested Anti-NUP50 Antibody Titration: 0.2-1 ug/ml; Positive Control: HepG2 cell lysate
There is BioGPS gene expression data showing that NUP50 is expressed in HepG2

NUP50



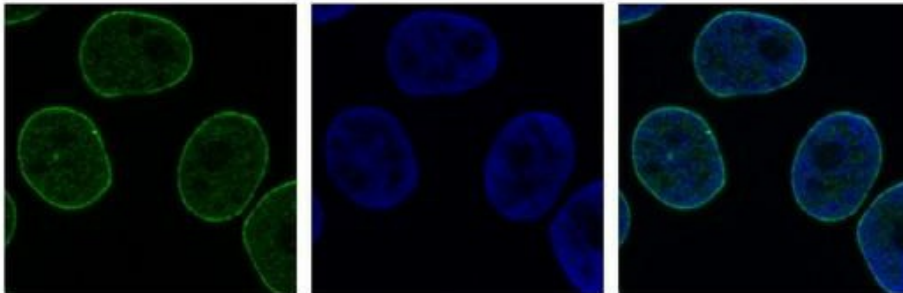
Rabbit Anti-NUP50
Sample Type: Human HepG2
Antibody Concentration: 1ug/mL

Host: Rabbit; Target Name: NUP50; Sample Tissue: HeLa; Antibody Dilution: 1.0 ug/ml; NUP50 is supported by BioGPS gene expression data to be expressed in HeLa

Nup50

DAPI

Merge



Sample Type: HeLa cell lysate;