

Product datasheet for **TA340151**

Ap4s1 Rabbit Polyclonal Antibody

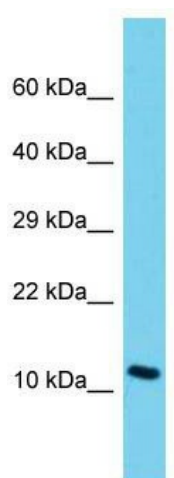
Product data:

Product Type:	Primary Antibodies
Applications:	WB
Recommended Dilution:	WB
Reactivity:	Rat
Host:	Rabbit
Isotype:	IgG
Clonality:	Polyclonal
Immunogen:	The immunogen for Anti-Ap4s1 antibody is: synthetic peptide directed towards the N-terminal region of Rat Ap4s1. Synthetic peptide located within the following region: VSKSCLSRSEQCSFIEYKDFKLIYRQYAALFVVGVNDTENEMAIYEFI
Formulation:	Liquid. Purified antibody supplied in 1x PBS buffer with 0.09% (w/v) sodium azide and 2% sucrose. <i>Note that this product is shipped as lyophilized powder to China customers.</i>
Concentration:	lot specific
Purification:	Affinity Purified
Conjugation:	Unconjugated
Storage:	Store at -20°C as received.
Stability:	Stable for 12 months from date of receipt.
Predicted Protein Size:	15 kDa
Gene Name:	adaptor-related protein complex 4, sigma 1 subunit
Database Link:	NP_001124471 Entrez Gene 366618 Rat
Background:	The function of this protein remains unknown.
Synonyms:	AP47B; CLA20; CLAPS4; FLJ32366; Sigma4-adaptin
Note:	Immunogen Sequence Homology: Pig: 100%; Rat: 100%; Horse: 100%; Human: 100%; Mouse: 100%; Bovine: 100%; Rabbit: 100%; Guinea pig: 100%; Zebrafish: 86%; Yeast: 77%



[View online »](#)

Product images:



Host: Rabbit; Target Name: Ap4s1; Sample
Tissue: Rat Stomach lysates; Antibody Dilution:
1.0 ug/ml