

Product datasheet for **TA340150**

Ap4s1 Rabbit Polyclonal Antibody

Product data:

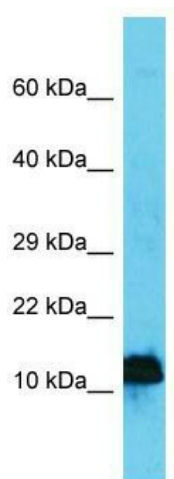
| | |
|-------------------------|--|
| Product Type: | Primary Antibodies |
| Applications: | WB |
| Recommended Dilution: | WB |
| Reactivity: | Mouse |
| Host: | Rabbit |
| Isotype: | IgG |
| Clonality: | Polyclonal |
| Immunogen: | The immunogen for Anti-Ap4s1 antibody is: synthetic peptide directed towards the N-terminal region of Mouse Ap4s1. Synthetic peptide located within the following region: KFFLMV NKQGQTRLSKYEHVDINKRALLETEVSKSCLSRSEQCSEFIY |
| Formulation: | Liquid. Purified antibody supplied in 1x PBS buffer with 0.09% (w/v) sodium azide and 2% sucrose. <i>Note that this product is shipped as lyophilized powder to China customers.</i> |
| Concentration: | lot specific |
| Purification: | Affinity Purified |
| Conjugation: | Unconjugated |
| Storage: | Store at -20°C as received. |
| Stability: | Stable for 12 months from date of receipt. |
| Predicted Protein Size: | 16 kDa |
| Gene Name: | adaptor-related protein complex AP-4, sigma 1 |
| Database Link: | NP_068356 Entrez Gene 11782 Mouse Q9WVL1 |
| Background: | Ap4s1 is a subunit of novel type of clathrin- or non-clathrin-associated protein coat involved in targeting proteins from the trans-Golgi network (TGN) to the endosomal-lysosomal system. |
| Synonyms: | AP47B; CLA20; CLAPS4; FLJ32366; Sigma4-adaptin |



[View online »](#)

Note: Immunogen Sequence Homology: Pig: 100%; Rat: 100%; Horse: 100%; Human: 100%; Mouse: 100%; Bovine: 100%; Rabbit: 100%; Zebrafish: 100%; Guinea pig: 100%; Goat: 86%; Yeast: 75%

Product images:



Host: Rabbit; Target Name: Ap4s1; Sample Tissue: Mouse Stomach lysates; Antibody Dilution: 1.0 ug/ml