

Product datasheet for **TA340146**

PIM2 Rabbit Polyclonal Antibody

Product data:

| | |
|-------------------------|--|
| Product Type: | Primary Antibodies |
| Applications: | WB |
| Recommended Dilution: | WB |
| Reactivity: | Human |
| Host: | Rabbit |
| Isotype: | IgG |
| Clonality: | Polyclonal |
| Immunogen: | The immunogen for anti-PIM2 antibody: synthetic peptide directed towards the middle region of human PIM2. Synthetic peptide located within the following region: LRRGCAKLIDFGSGALLHDEPYTDFDGTRVYSPPEWISRHQYHALPATVW |
| Formulation: | Liquid. Purified antibody supplied in 1x PBS buffer with 0.09% (w/v) sodium azide and 2% sucrose. <i>Note that this product is shipped as lyophilized powder to China customers.</i> |
| Concentration: | lot specific |
| Purification: | Affinity Purified |
| Conjugation: | Unconjugated |
| Storage: | Store at -20°C as received. |
| Stability: | Stable for 12 months from date of receipt. |
| Predicted Protein Size: | 34 kDa |
| Gene Name: | Pim-2 proto-oncogene, serine/threonine kinase |
| Database Link: | NP_006866 Entrez Gene 11040 Human Q9P1W9 |
| Background: | This gene encodes a protooncogene that acts as a serine/threonine protein kinase. Studies determined the encoded protein functions to prevent apoptosis and to promote cell survival. |
| Synonyms: | Pim-2h |



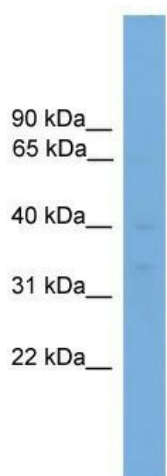
[View online »](#)

Note: Immunogen Sequence Homology: Dog: 100%; Pig: 100%; Rat: 100%; Horse: 100%; Human: 100%; Mouse: 100%; Bovine: 100%; Rabbit: 100%; Guinea pig: 100%; Sheep: 79%; Zebrafish: 79%

Protein Families: Druggable Genome, Protein Kinase

Protein Pathways: Acute myeloid leukemia

Product images:



WB Suggested Anti-PIM2 Antibody Titration: 0.2-1 ug/ml; ELISA Titer: 1: 1562500; Positive Control: HepG2 cell lysate