

Product datasheet for **TA340145**

Adap1 Rabbit Polyclonal Antibody

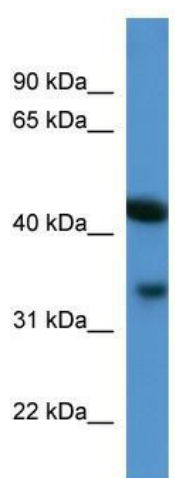
Product data:

Product Type:	Primary Antibodies
Applications:	WB
Recommended Dilution:	WB
Reactivity:	Mouse
Host:	Rabbit
Isotype:	IgG
Clonality:	Polyclonal
Immunogen:	The immunogen for anti-Centa1 antibody: synthetic peptide corresponding to a region of Mouse. Synthetic peptide located within the following region: ARFHYLQVAFPGASDADLVPKLSRNYLKEGYMEKTGPKQTEGFRKRWFTM
Formulation:	Liquid. Purified antibody supplied in 1x PBS buffer with 0.09% (w/v) sodium azide and 2% sucrose. <i>Note that this product is shipped as lyophilized powder to China customers.</i>
Concentration:	lot specific
Purification:	Affinity Purified
Conjugation:	Unconjugated
Storage:	Store at -20°C as received.
Stability:	Stable for 12 months from date of receipt.
Predicted Protein Size:	33 kDa
Gene Name:	ArfGAP with dual PH domains 1
Database Link:	NP_766311 Entrez Gene 231821 Mouse
Background:	The function of this protein remains unknown.
Synonyms:	CENTA1; centaurin-alpha; Centaurin-alpha-1; GCS1L; p42IP4
Note:	Immunogen Sequence Homology: Dog: 100%; Pig: 100%; Rat: 100%; Human: 100%; Mouse: 100%; Bovine: 93%; Guinea pig: 93%



[View online »](#)

Product images:



WB Suggested Anti-Centa1 Antibody Titration:
0.2-1 ug/ml; ELISA Titer: 1: 1562500; Positive
Control: Mouse Kidney