

Product datasheet for **TA340144**

RAB35 Rabbit Polyclonal Antibody

Product data:

Product Type:	Primary Antibodies
Applications:	WB
Recommended Dilution:	WB
Reactivity:	Human
Host:	Rabbit
Isotype:	IgG
Clonality:	Polyclonal
Immunogen:	The immunogen for anti-RAB35 antibody: synthetic peptide directed towards the middle region of human RAB35. Synthetic peptide located within the following region: GIQLFETSAKENVNVEEMFNCITELVLRRAKKNLAKQQQQQNDVVKLTK
Formulation:	Liquid. Purified antibody supplied in 1x PBS buffer with 0.09% (w/v) sodium azide and 2% sucrose. <i>Note that this product is shipped as lyophilized powder to China customers.</i>
Concentration:	lot specific
Purification:	Affinity Purified
Conjugation:	Unconjugated
Storage:	Store at -20°C as received.
Stability:	Stable for 12 months from date of receipt.
Predicted Protein Size:	23 kDa
Gene Name:	RAB35, member RAS oncogene family
Database Link:	NP_006852 Entrez Gene 11021 Human Q15286
Background:	RAB35 possesses GTPase activity.
Synonyms:	H-ray; RAB1C; RAY

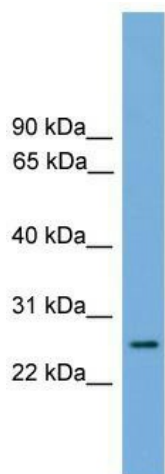


[View online »](#)

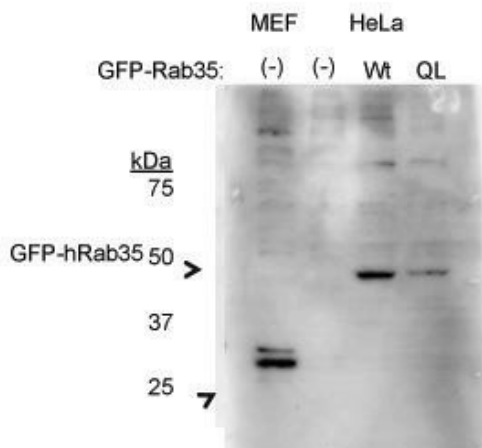
Note: Immunogen Sequence Homology: Dog: 100%; Pig: 100%; Rat: 100%; Horse: 100%; Human: 100%; Mouse: 100%; Yeast: 100%; Bovine: 100%; Rabbit: 100%; Guinea pig: 100%; Zebrafish: 79%

Protein Families: Druggable Genome

Product images:



WB Suggested Anti-RAB35 Antibody Titration: 0.2-1 ug/ml; Positive Control: Human heart



RAB35 antibody - middle region validated by WB using HeLa cells, HEK293T cells at 1: 500.