

Product datasheet for **TA340142**

Methionine Aminopeptidase 2 (METAP2) Rabbit Polyclonal Antibody

Product data:

Product Type:	Primary Antibodies
Applications:	WB
Recommended Dilution:	IHC, WB
Reactivity:	Human
Host:	Rabbit
Isotype:	IgG
Clonality:	Polyclonal
Immunogen:	The immunogen for anti-METAP2 antibody: synthetic peptide directed towards the N terminal of human METAP2. Synthetic peptide located within the following region: ATGKKKKKKKKRGPVKVQTDPPSPICDLYPNGVFPKQGECEYPPTQDGR
Formulation:	Liquid. Purified antibody supplied in 1x PBS buffer with 0.09% (w/v) sodium azide and 2% sucrose. <i>Note that this product is shipped as lyophilized powder to China customers.</i>
Concentration:	lot specific
Purification:	Affinity Purified
Conjugation:	Unconjugated
Storage:	Store at -20°C as received.
Stability:	Stable for 12 months from date of receipt.
Predicted Protein Size:	53 kDa
Gene Name:	methionyl aminopeptidase 2
Database Link:	NP_006829 Entrez Gene 10988 Human P50579



[View online »](#)

Background:

METAP2 is a member of the methionyl aminopeptidase family and encodes a protein that binds 2 cobalt or manganese ions. This protein functions both by protecting the alpha subunit of eukaryotic initiation factor 2 from inhibitory phosphorylation and by removing the amino-terminal methionine residue from nascent protein. Increased expression of this gene is associated with various forms of cancer and the anti-cancer drugs fumagillin and ovalicin inhibit the protein by irreversibly binding to its active site. This gene is a member of the methionyl aminopeptidase family and encodes a protein that binds 2 cobalt or manganese ions. This protein functions both by protecting the alpha subunit of eukaryotic initiation factor 2 from inhibitory phosphorylation and by removing the amino-terminal methionine residue from nascent protein. Increased expression of this gene is associated with various forms of cancer and the anti-cancer drugs fumagillin and ovalicin inhibit the protein by irreversibly binding to its active site. A pseudogene of this gene is located on chromosome 2. Publication Note: This RefSeq record includes a subset of the publications that are available for this gene. Please see the Entrez Gene record to access additional publications.

Synonyms:

MAP2; MNPEP; p67eIF2

Note:

Immunogen Sequence Homology: Dog: 100%; Pig: 100%; Rat: 100%; Horse: 100%; Human: 100%; Mouse: 100%; Bovine: 100%; Guinea pig: 100%; Rabbit: 92%; Zebrafish: 85%

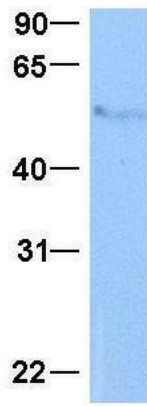
Protein Families:

Druggable Genome, Protease

Product images:

WB Suggested Anti-METAP2 Antibody Titration:
0.2-1 ug/ml; Positive Control: Human brain

METAP2



Rabbit Anti-METAP2
Sample Type: Human Jurkat
Antibody Concentration: 1ug/mL

Host: Rabbit; Target Name: METAP2; Sample Tissue: Jurkat; Antibody Dilution: 1.0 ug/ml; METAP2 is strongly supported by BioGPS gene expression data to be expressed in Human Jurkat cells